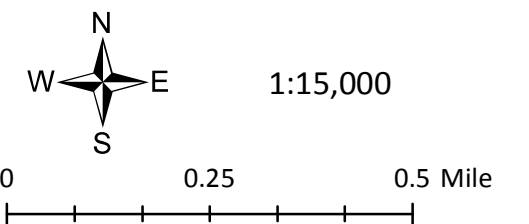


Map 9: Existing Land Use Essex Junction 2014 Village Plan

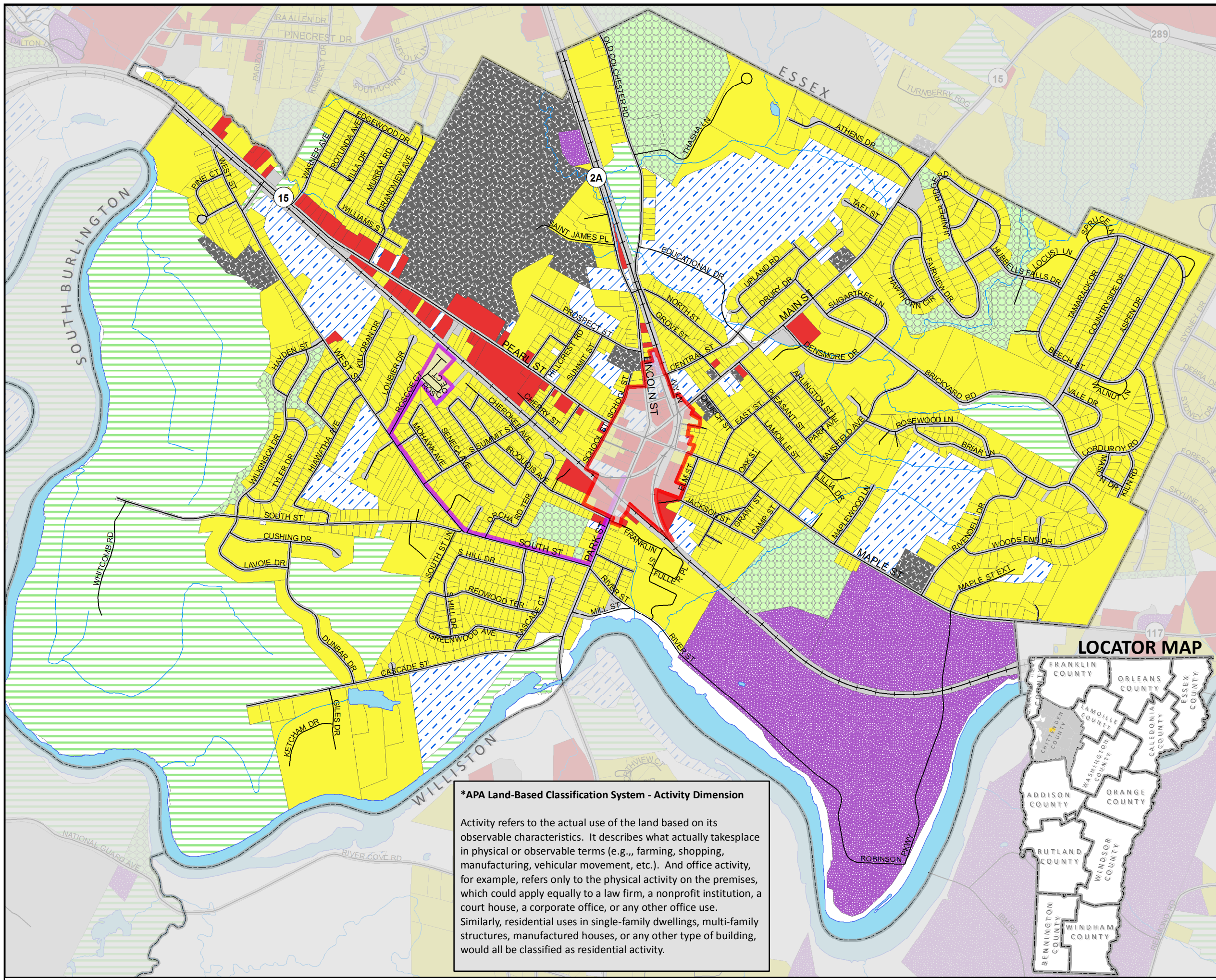
Legend

-  Designated Village Center
-  Vermont Neighborhood Designation
- Primary Land Use Activity***
-  Residential activities
-  Shopping, business or trade activities
-  Industrial, manufacturing, and waste-related activities
-  Social, institutional, or infrastructure-related activities
-  Travel or movement activities
-  Mass assembly of people
-  Leisure activities
-  Natural resource-related activities



Source:
 Existing Land Use - Minor update by CCRPC, 5/2014
 Road Centerline - e911, 7/2013
 Railroad - VTrans, 2003
 Surface Water - VHD, 2008 (VCGI)
 Map created by P. Brangan using ArcGIS. All data is in State Plane Coordinate System, NAD 1983.

Disclaimer:
 The accuracy of information presented is determined by its sources. Errors and omissions may exist. The Chittenden County Regional Planning Commission is not responsible for these. Questions of on-the-ground location can be resolved by site inspections and/or surveys by registered surveyor. This map is not sufficient for delineation of features on-the-ground. This map identifies the presence of features, and may indicate relationships between features, but is not a replacement for surveyed information or engineering studies.



***APA Land-Based Classification System - Activity Dimension**

Activity refers to the actual use of the land based on its observable characteristics. It describes what actually takes place in physical or observable terms (e.g., farming, shopping, manufacturing, vehicular movement, etc.). And office activity, for example, refers only to the physical activity on the premises, which could apply equally to a law firm, a nonprofit institution, a court house, a corporate office, or any other office use. Similarly, residential uses in single-family dwellings, multi-family structures, manufactured houses, or any other type of building, would all be classified as residential activity.