

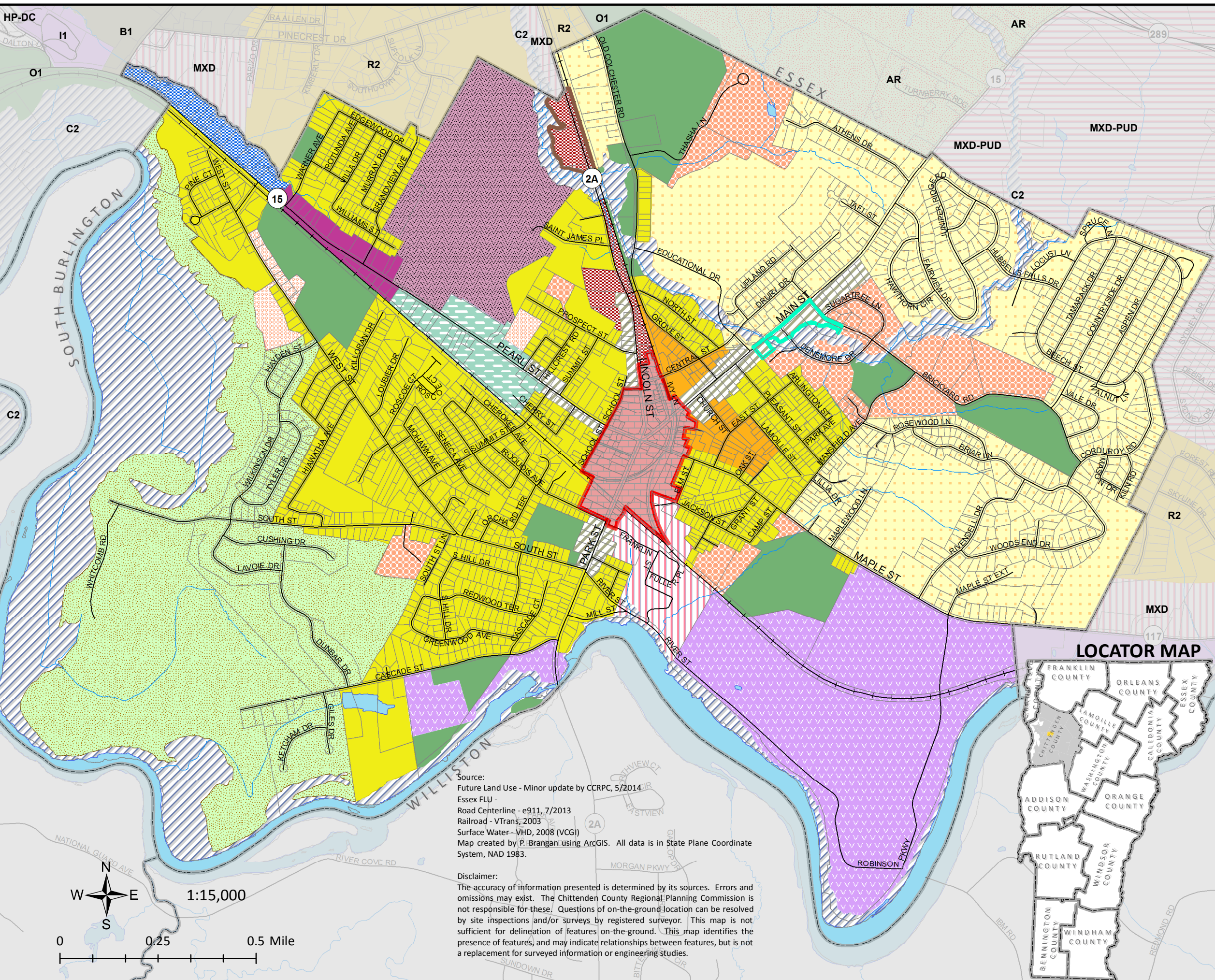
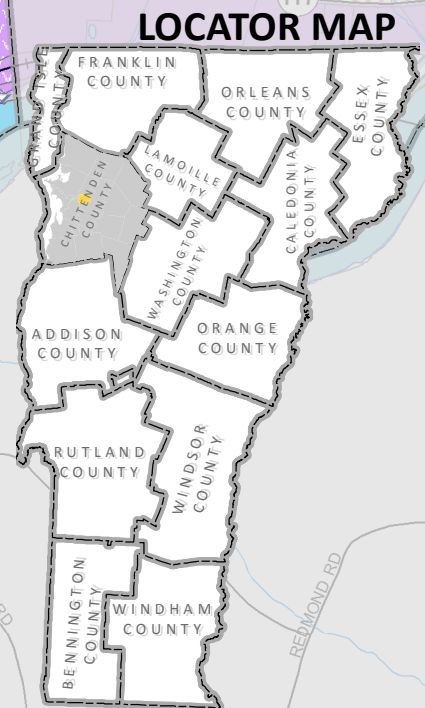
# Map 10: Future Land Use Essex Junction 2014 Village Plan Legend

## Future Land Use

- Residential 1
- Residential 2
- Multi-Family Residential 1
- Multi-Family Residential 2
- Multi-Family Residential 3
- Multi-Family/Mixed Use 1
- Multi-Family/Mixed Use 2
- Village Center
- Transit Oriented Development
- Residential-Office
- Mixed Commercial Use
- Highway-Arterial
- Light Industrial
- Planned Exposition
- Planned Agriculture
- Open Space
- Floodplain
- Designated Village Center
- North Lincoln Overlay District
- Professional Office Overlay

## Essex Future Land Use

- Agriculture - Residential (AR)
- Floodplain (C2)
- Industrial (I1)
- Medium Density Residential (R2)
- Mixed Use (MXD)
- Mixed Use - PUD (MXD\_PUD)
- Open Recreation (O1)
- Retail - Business (B1)



Source:  
 Future Land Use - Minor update by CCRPC, 5/2014  
 Essex FLU -  
 Road Centerline - e911, 7/2013  
 Railroad - VTrans, 2003  
 Surface Water - VHD, 2008 (VCGI)  
 Map created by P. Brangan using ArcGIS. All data is in State Plane Coordinate System, NAD 1983.

Disclaimer:  
 The accuracy of information presented is determined by its sources. Errors and omissions may exist. The Chittenden County Regional Planning Commission is not responsible for these. Questions of on-the-ground location can be resolved by site inspections and/or surveys by registered surveyor. This map is not sufficient for delineation of features on-the-ground. This map identifies the presence of features, and may indicate relationships between features, but is not a replacement for surveyed information or engineering studies.

