

RENTAL UNITS DATA ANALYSIS

City of Essex Junction





258

Estimated Total
Rented Properties



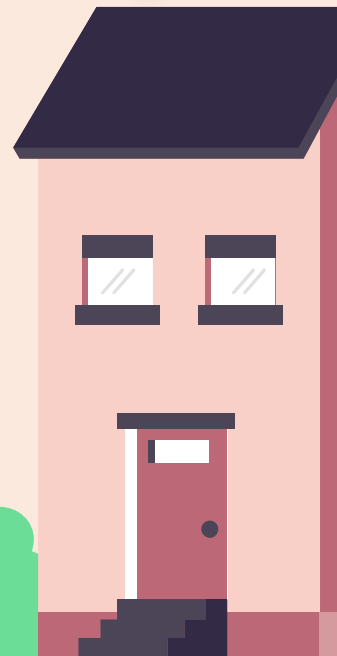
1904

Estimated Total
Rented Units



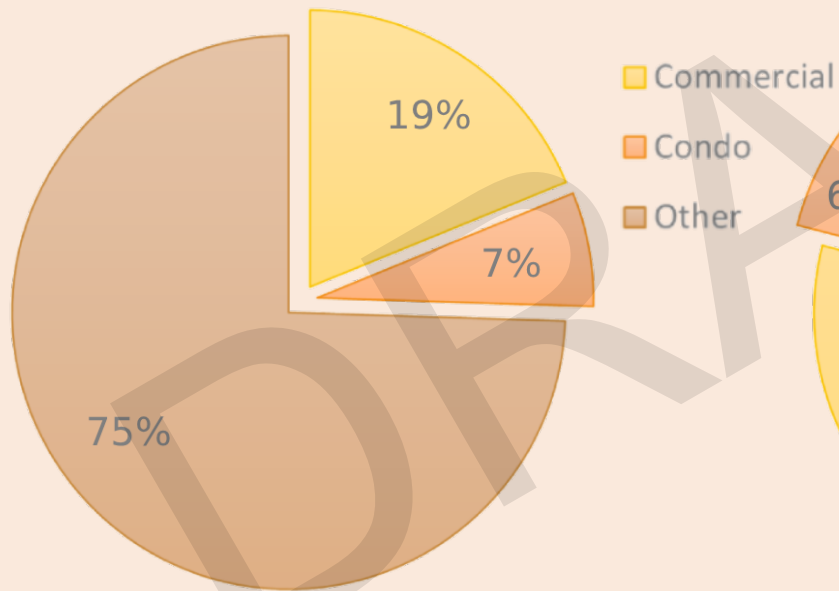
17

Estimated Condo
Properties Rented Out

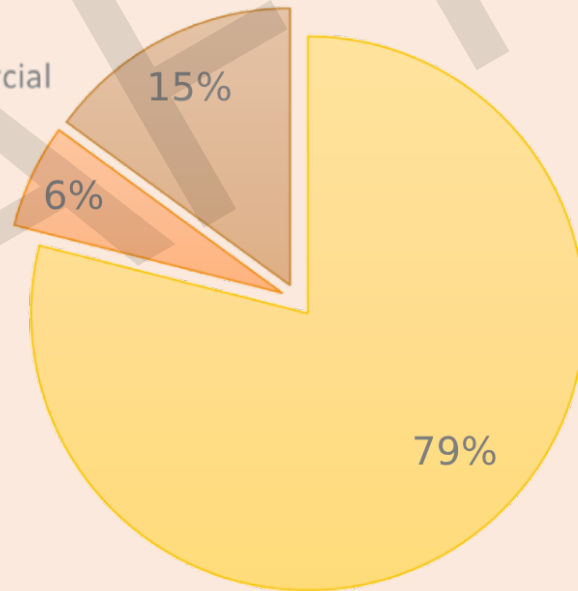


Categories of Rentals

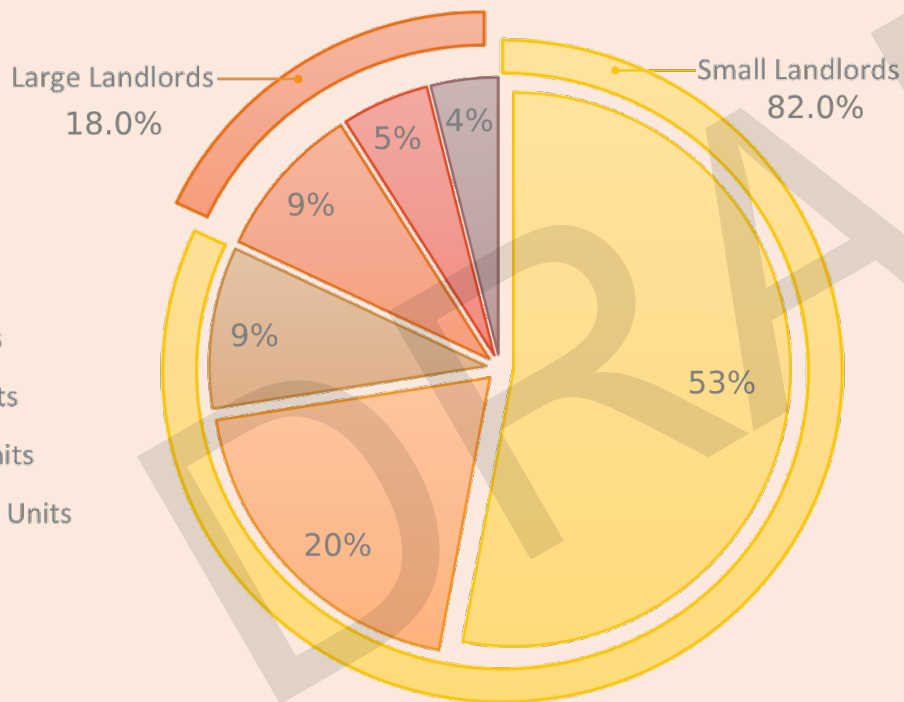
By Property Count



By Unit Count



Rental Property Count

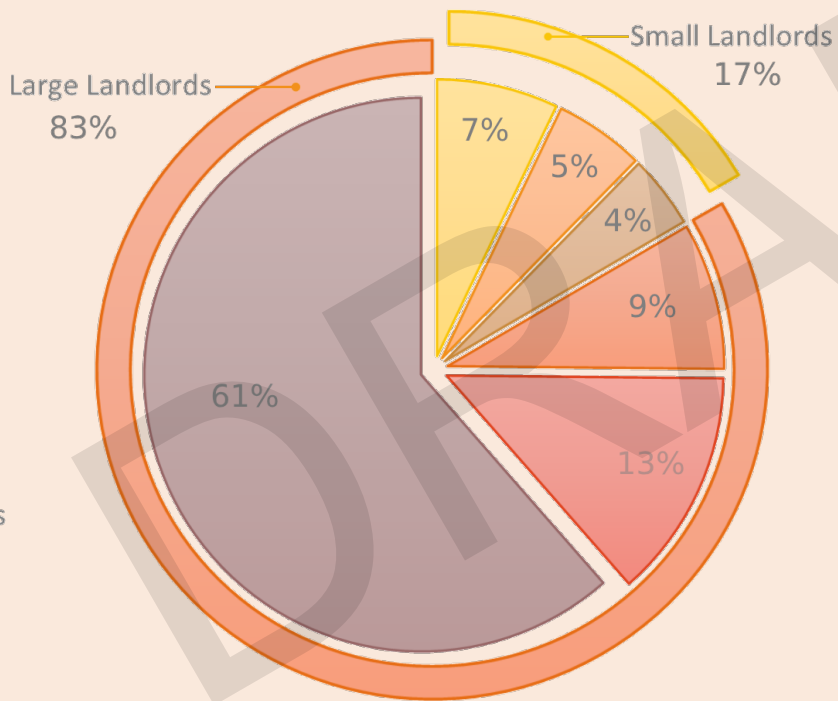


How many units per each property?

Over half of the properties are individual units, meaning they are stand alone units not part of a larger complex or building. The quantity of properties at higher density steadily decrease as the quantity increases.



Rental Unit Count



Large and Small Landlords

By contrast, majority rental units are owned by a landlord who manages up to four properties. Landlords who manage properties of five or more units comprise over eighty percent of the rental units in Essex Junction.

- Single Unit
- Duplex
- 3 to 4 Units
- 5 to 10 Units
- 11 to 30 Units
- 31 or More Units



Largest Landlords

01

**Curt
Montgomery**
455 Units

02

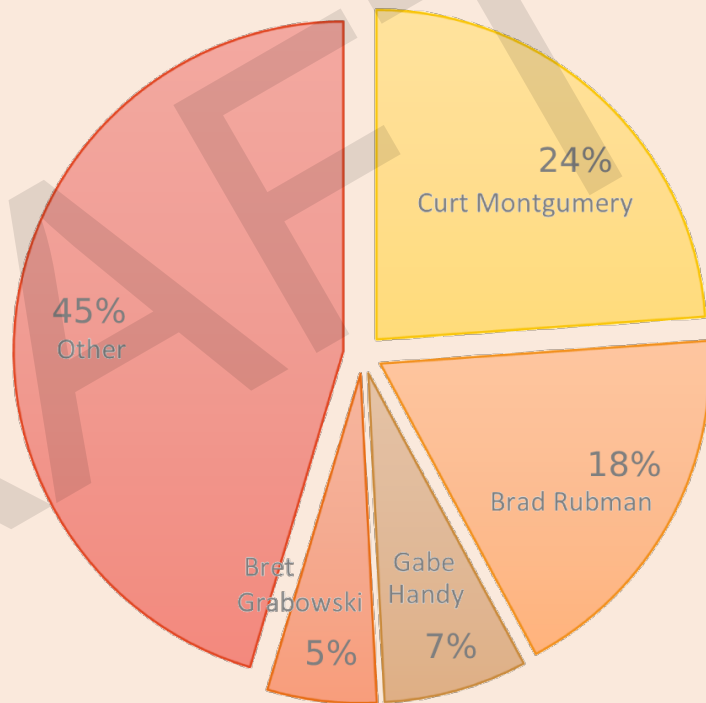
**Brad
Rubman**
348 Units

03

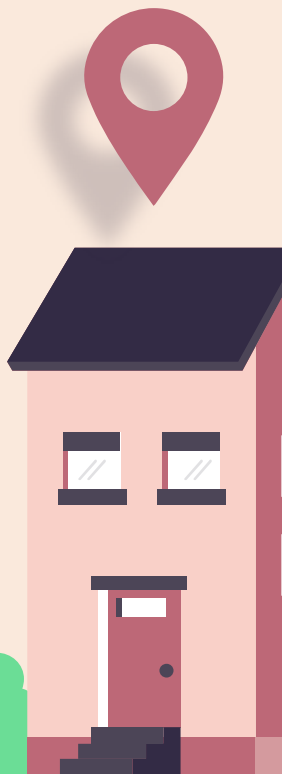
**Gabe
Handy**
134 Units

04

**Bret
Grabowski**
102 Units



By unit count, the four largest landlords as listed above own combinations of properties totaling 54.6% of all rental units.



THANKS

DOES ANYONE HAVE ANY QUESTIONS?

DRAFT

