



August 14, 2025

Christopher Yuen  
 Community Development Director  
 City of Essex Junction  
 2 Lincoln Street  
 Essex Junction, Vermont 05452

RE: Environmental Sound Monitoring – Wolfsgart 2025

Dear Mr. Yuen;

Vermont Air Testing Services (VATS) was retained by the City of Essex Junction to perform perimeter environmental sound monitoring at the Champlain Valley Exposition (CVE) for selected outdoor events held at the facility throughout the 2025 summer outdoor event season. Sound monitoring was performed using Quest Technologies Sound Pro DL Type II integrating/logging sound level meter (SLM) setup to collect broadband sound level readings. The SLM used for the monitoring was configured to log average sound pressure levels every 5 seconds in the broadband or A-weighted scale. The SLM microphone was fitted with a windscreen to minimize wind disturbance. The SLM was calibrated to a 114 decibel (dB) tone prior to and following the sound monitoring event.

One SLM was deployed overnight for each Wolfsgart event held at the CVE starting on the evening of Thursday, July 24<sup>th</sup> through Sunday morning, July 27<sup>th</sup> with three nights of overnight monitoring. A single SLM was used to monitor each night of the event and the SLM was placed along the eastern boundary fence line approximately 50 feet south of the Green Gate entrance. The Wolfsgart event was an overnight camping event with activities held throughout the evening primarily in the parking and RV camping areas at the fairgrounds. The weather for the event started with fair skies with winds out of the south up to 12 mph changing over to winds out of the east up to 5 mph. The skies remained fair throughout most of the event. The temperatures ranged from the low 80's to the mid 60's. There was a period of misting rain during the early hours on July 26<sup>th</sup>. Sound monitoring began between 7:00 pm and 8 pm each evening and concluded 12 hours later the following morning at 7:00 am or 8 am. The sound monitoring data is presented in the attached charts and a summary of the monitoring data is provided below.

All Category B sound waived events use the maximum hourly average sound level of 78 dBA with the maximum 5-minute average sound level defined at 83 dBA throughout the event. The table below presents the SLM property line hourly average sound data, the maximum sound levels and the time duration of sound levels above maximum allowable noise level in minutes. The table below presents the Thursday night SLM property line hourly average sound data, the maximum sound levels and the time duration of sound levels above maximum allowable sound level in minutes.

Thursday Night – July 24 Hourly Data												
	1	2	3	4	5	6	7	8	9	10	11	12
Hourly Average (dBA)	48.4	50.9	50.3	47.4	47.0	45.6	44.6	44.7	44.6	45.1	45.7	50.1
Max Sound Level (dBA)	58.5	59.7	59.4	57.7	56.5	54.2	47.7	47.7	47.1	49.7	51.9	63.4
Time Above Max Level (min)	0.0	0.0	0.0	0.0	0.0	0.0	0.0	0.0	0.0	0.0	0.0	0.0

The data presented above indicates the hourly average and maximum sound limits were not exceeded at any time during the monitoring event.

The Friday night monitoring data is presented in the following table:

Friday Night – July 25 Hourly Data												
	1	2	3	4	5	6	7	8	9	10	11	12
Hourly Average (dBA)	50.4	51.6	53.0	52.5	51.7	51.4	51.0	49.8	42.4	41.9	42.0	42.8
Max Sound Level (dBA)	63.9	68.1	65.9	62.7	60.7	59.1	57.6	60.4	54.8	45.4	51.4	63.2
Time Above Max Level (min)	0.0	0.0	0.0	0.0	0.0	0.0	0.0	0.0	0.0	0.0	0.0	0.0

Again, the data presented above indicates the hourly average and maximum sound limits were not exceeded at any time during the monitoring event.

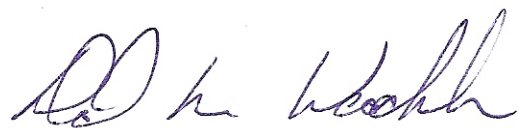
The Saturday night monitoring data is presented in the following table:

Saturday Night – July 26 Hourly Data												
	1	2	3	4	5	6	7	8	9	10	11	12
Hourly Average (dBA)	50.1	53.5	56.0	52.3	48.2	46.7	45.1	44.7	48.5	49.1	49.7	51.3
Max Sound Level (dBA)	61.7	66.0	69.4	61.3	72.2	63.8	67.2	49.7	52.6	57.2	55.7	58.8
Time Above Max Level (min)	0.0	0.0	0.0	0.0	0.0	0.0	0.0	0.0	0.0	0.0	0.0	0.0

As with the other overnight data, the sound level data presented above indicates the hourly average and maximum sound limits were not exceeded at any time during the monitoring event.

The sound level data is presented in attached charts for the SLM used during the Wolfsgart monitoring event held on July 24<sup>th</sup> through July 27<sup>th</sup>, 2025. The sound levels measured throughout the event did not exceed the established sound level criteria without exception. The established sound level criteria used for monitoring outdoor events held at the Champlain Valley Exposition are defined in the Sound Indemnification Agreement between the Champlain Valley Exposition and the City of Essex Junction.

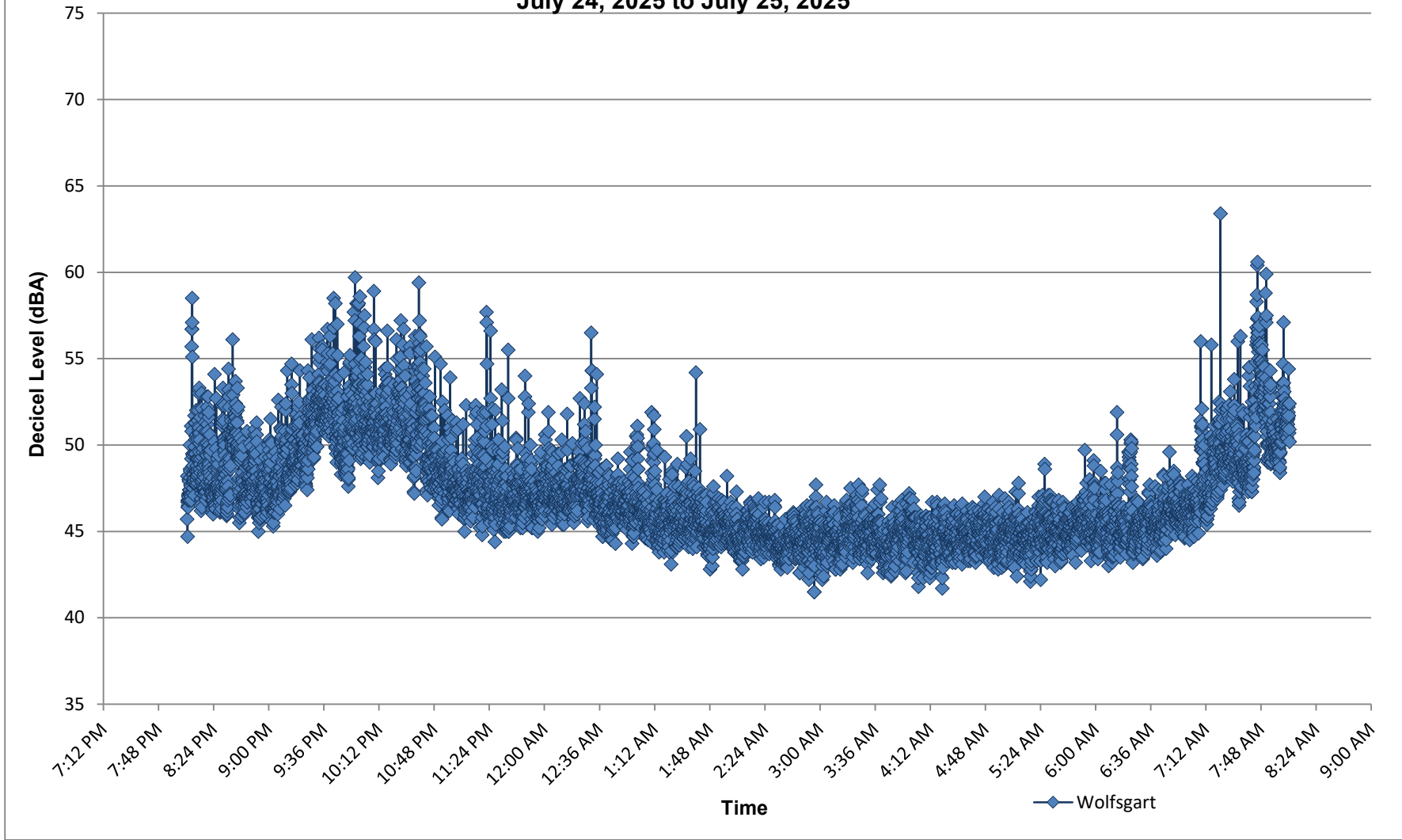
Best regards,



Principal

C:\Vermont Air Testing Services\Projects\Champlain Valley Exposition\2025\Wolfsgart 2025.docx

Champlain Valley Exposition  
Wolfsgart - East Boundary Noise Monitoring  
July 24, 2025 to July 25, 2025

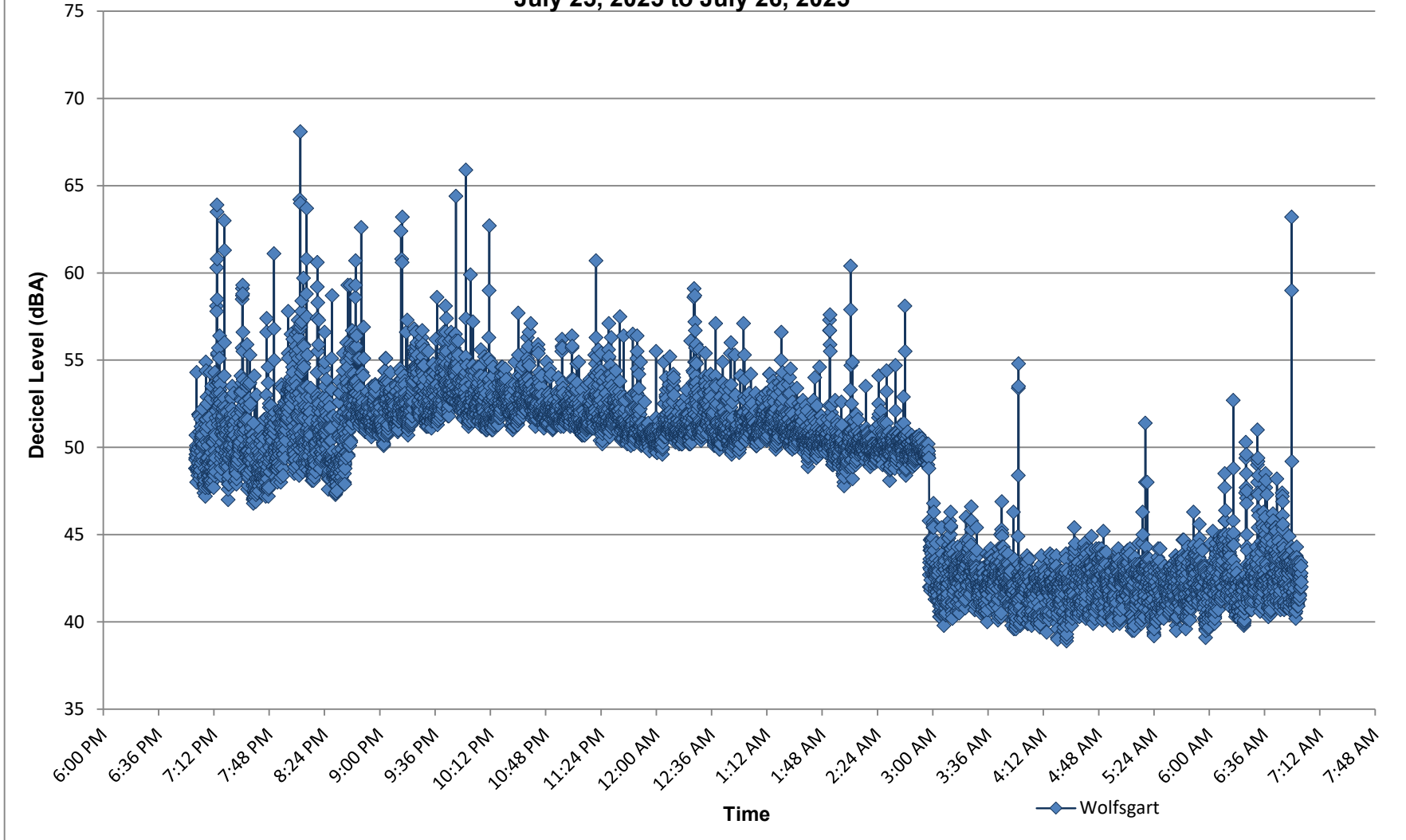


	Hour 1	Hour 2	Hour 3	Hour 4	Hour 5	Hour 6	Hour 7	Hour 8	Hour 9	Hour 10	Hour 11	Hour 12
Hourly Avg	48.4	50.9	50.3	47.4	47.0	45.6	44.6	44.7	44.6	45.1	45.7	50.1
Max Levels	58.5	59.7	59.4	57.7	56.5	54.2	47.7	47.7	47.1	49.7	51.9	63.4
Exceeding Limit (min)	0.0	0.0	0.0	0.0	0.0	0.0	0.0	0.0	0.0	0.0	0.0	0.0

Max Hourly Averages: 78 dBA  
Max Levels (5 min average): 83 dBA

Hour 1 to Hour 5: 7 pm to 12 am  
Hour 6: 12 am to 1 am  
Hour 7 to Hour 12: 1 am to 7 am

**Champlain Valley Exposition  
Wolfsgart - East Boundary Noise Monitoring  
July 25, 2025 to July 26, 2025**

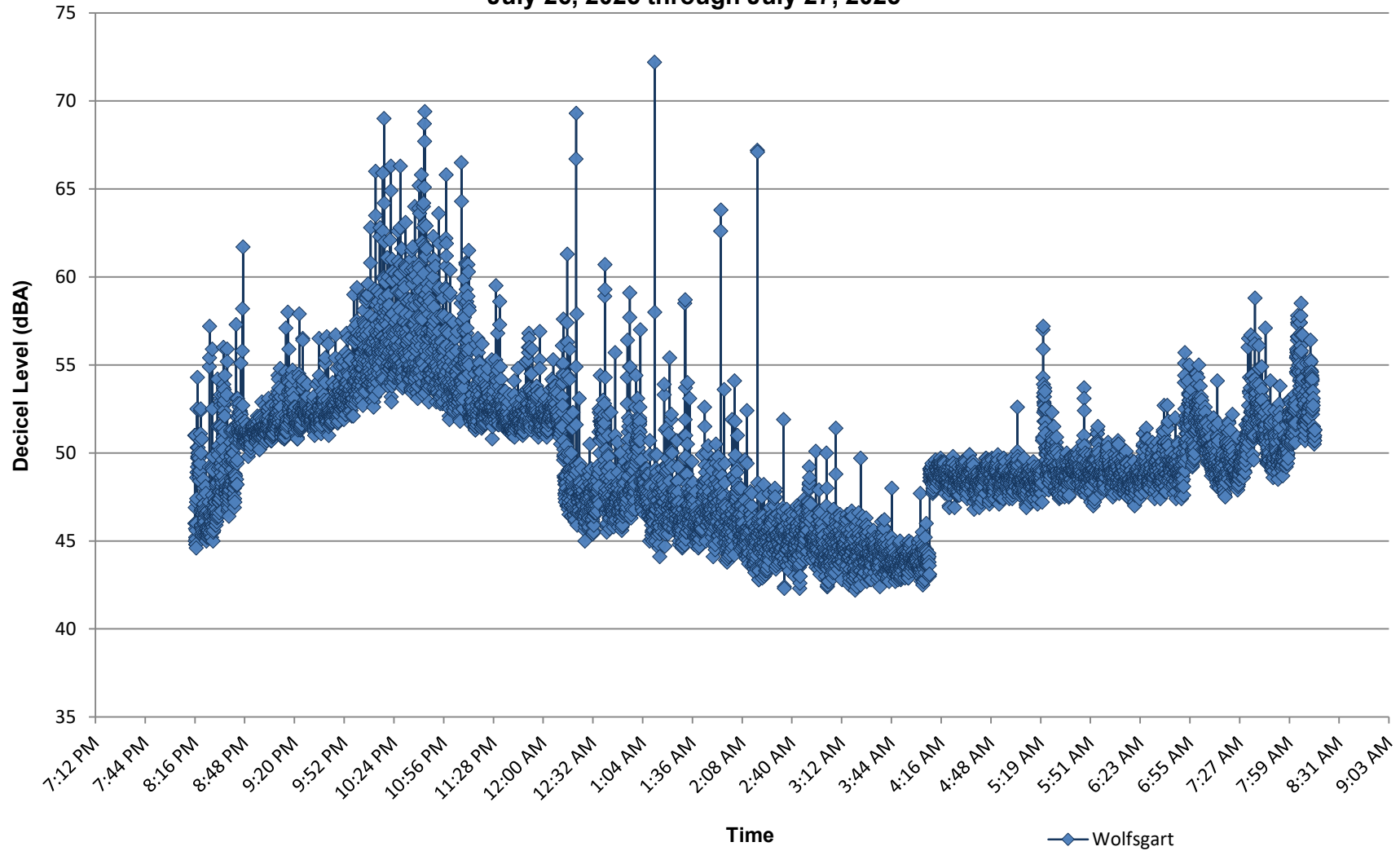


	Hour 1	Hour 2	Hour 3	Hour 4	Hour 5	Hour 6	Hour 7	Hour 8	Hour 9	Hour 10	Hour 11	Hour 12
Hourly Avg	50.4	51.6	53.0	52.5	51.7	51.4	51.0	49.8	42.4	41.9	42.0	42.8
Max Levels	63.9	68.1	65.9	62.7	60.7	59.1	57.6	60.4	54.8	45.4	51.4	63.2
Exceeding Limit (min)	0.0	0.0	0.0	0.0	0.0	0.0	0.0	0.0	0.0	0.0	0.0	0.0

Max Hourly Averages: 78 dBA  
Max Levels (5 min average): 83 dBA

Hour 1 to Hour 5: 7 pm to 12 am  
Hour 6: 12 am to 1 am  
Hour 7 to Hour 12: 1 am to 7 am

**Champlain Valley Exposition  
Wolfgang - East Boundary Noise Monitoring  
July 26, 2025 through July 27, 2025**



	Hour 1	Hour 2	Hour 3	Hour 4	Hour 5	Hour 6	Hour 7	Hour 8	Hour 9	Hour 10	Hour 11	Hour 12
Hourly Avg	50.1	53.5	56.0	52.3	48.2	46.7	45.1	44.7	48.5	49.1	49.7	51.3
Max Levels	61.7	66.0	69.4	61.3	72.2	63.8	67.2	49.7	52.6	57.2	55.7	58.8
Exceeding Limit (min)	0.0	0.0	0.0	0.0	0.0	0.0	0.0	0.0	0.0	0.0	0.0	0.0

Max Hourly Averages: 78 dBA  
Max Levels (5 min average): 83 dBA

Hour 1 to Hour 5: 8 pm to 1 am  
Hour 6: 1 am to 2 am  
Hour 7 to Hour 12: 2 am to 8 am