



August 18, 2025

Christopher Yuen
Community Development Director
City of Essex Junction
2 Lincoln Street
Essex Junction, Vermont 05452

RE: Environmental Sound Monitoring – Mumford & Son’s Concert

Dear Mr. Yuen;

Vermont Air Testing Services (VATS) was retained by the City of Essex Junction to perform perimeter environmental sound monitoring at the Champlain Valley Exposition (CVE) for selected outdoor events held at the facility throughout the 2025 summer concert and fair season. Sound monitoring for this event was performed using three Quest Technologies Sound Pro DL Type II integrating/logging sound level meters (SLM) setup to collect broadband sound level readings. The three SLMs used for monitoring were configured to log average sound pressure levels every 5 seconds in the broadband or A-weighted scale. The microphones for each meter were fitted with a windscreen to minimize wind disturbance. All meters were calibrated to a 114 decibel (dB) tone prior to the monitoring event, and the calibration was checked following the sound monitoring event.

Three SLMs were deployed for the Mumford & Son’s Concert event held in the Grandstand area of the CVE facility on August 7, 2025. The east and west fence-line boundaries were monitored for sound levels as typical for concert events, but a third meter was added for this monitoring event due to the Grandstand location. The east boundary meter was located approximately 50 feet south of the Green Gate along the fence line. The west boundary meter was located on the berm along Weston Way in direct line of sight of the Grandstand sound system tower. The south boundary meter was located between the southside of the administration building and the property boundary, approximately 50 feet north of Pearl Street. The concert was a 3-plus hour event with the music beginning at approximately 7:30 pm on the Grandstand stage, which was oriented to the southern property line. The East and West SLMs began collecting sound data prior to the beginning of the show until its conclusion. The South SLM began collecting sound data at approximately 8:15 pm until the conclusion of the show.

The weather for the Thursday night show was mostly cloudy skies with light winds coming out of the east and temperatures starting in the 70’s throughout the event. Sound monitoring along both the eastern and western boundaries began at approximately 7:30 pm and the sound monitoring concluded after the show ended at 10:40 pm. Both meters monitored the sound levels continuously throughout the event from the beginning of the concert to its conclusion. The sound monitoring data is presented for both meters in the attached charts and a summary of the monitoring data is provided below.

The maximum allowable hourly average sound level is established at 78 dBA with the maximum 5-minute average sound level set at 83 dBA. The table below presents the SLM east property line hourly

average sound data, the maximum measured sound level, and the time duration of sound levels above maximum allowable sound level in minutes.

Table 1: East Property Line Data

	Hour 1	Hour 2	Hour 3	Hour 4
Hourly Average (dBA)	63.3	65.5	68.7	69.9
Max Sound Level (dBA)	77.6	81.6	81.5	81.5
Time Above Max Level (min)	0.0	0.0	0.0	0.0

The data presented above indicates that the hourly average sound limits were not exceeded along the east boundary at any time during the concert event. The maximum sound level was not exceeded along the east property boundary throughout the event. The maximum sound limit is defined as a sustained maximum five-minute average in the established sound criteria limits (83 dBA).

The west property line sound monitoring data is presented below in the same manner as the east property line data above.

Table 2: West Property Line Data

	Hour 1	Hour 2	Hour 3	Hour 4
Hourly Average (dBA)	58.0	61.1	64.5	67.4
Max Sound Level (dBA)	71.4	78.3	73.8	81.5
Time Above Max Level (min)	0.0	0.0	0.0	0.0

The data shown above indicates the west side property line sound levels were all below the 78 dBA hourly average limit during the concert monitoring event. The maximum sound levels were also maintained below the 83 dBA limit.

The south property line sound monitoring data is presented below in the same manner as the other property line location data above.

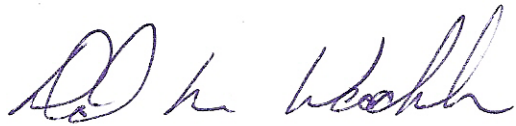
Table 3: South Property Line Data

	Hour 1	Hour 2	Hour 3	Hour 4
Hourly Average (dBA)	57.4	60.2	62.1	60.7
Max Sound Level (dBA)	71.4	83.4	71.9	76.2
Time Above Max Level (min)	0.0	0.1	0.0	0.0

The data shown above indicates the south side property line sound levels were all below the 78 dBA hourly average limit during the concert monitoring event. The maximum sound levels were also maintained below the 83 dBA limit.

The sound level data is presented in attached charts for the SLMs used during the Mumford & Son's Concert event held on August 7, 2025. The sound levels measured throughout the event did not exceed the established sound level criteria without exception. The established sound level criteria used for monitoring outdoor events held at the Champlain Valley Exposition are defined in the Noise Indemnification Agreement between the Champlain Valley Exposition and the City of Essex Junction.

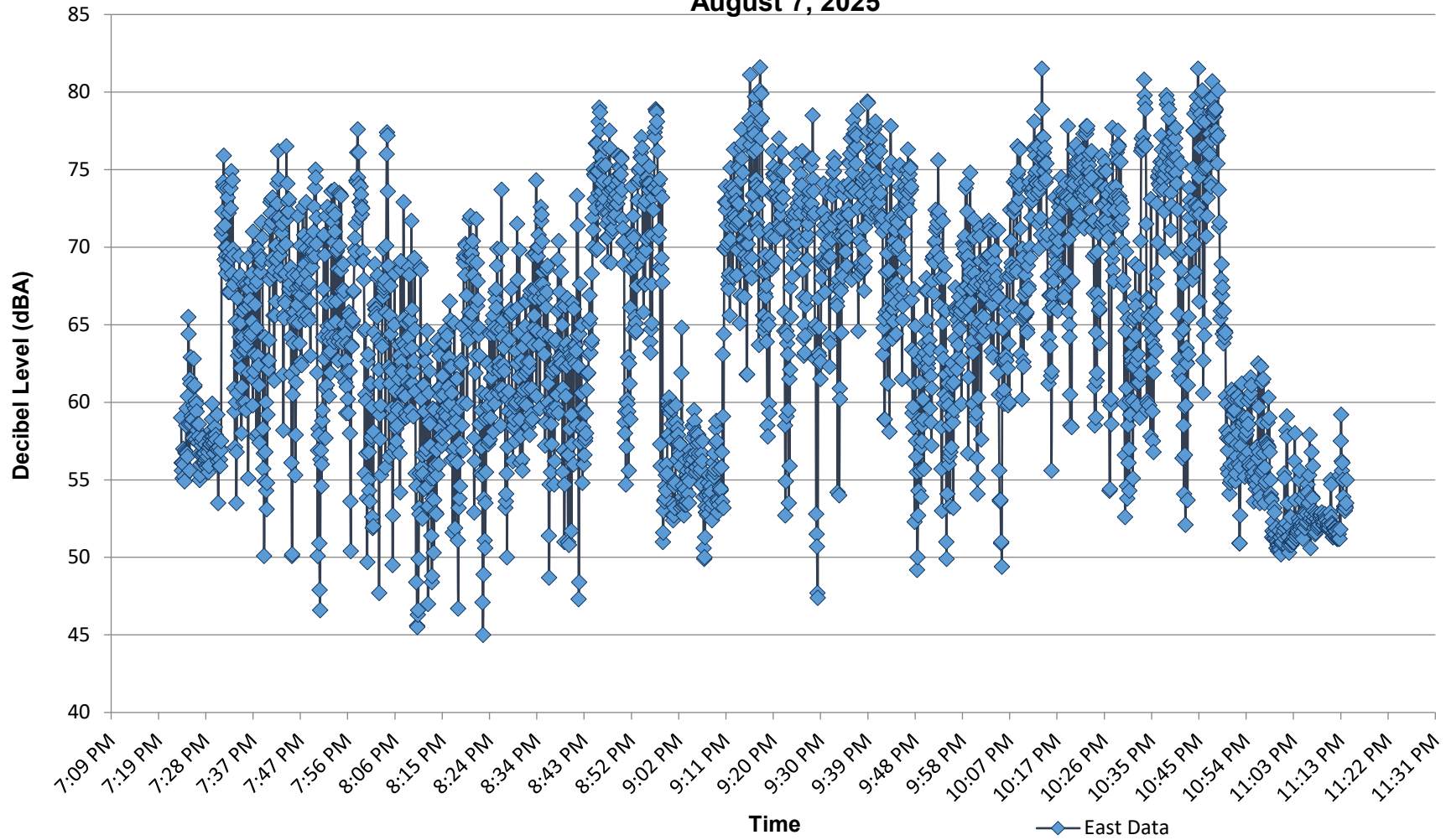
Best regards,

A handwritten signature in blue ink, appearing to read "D H Heath".

Principal

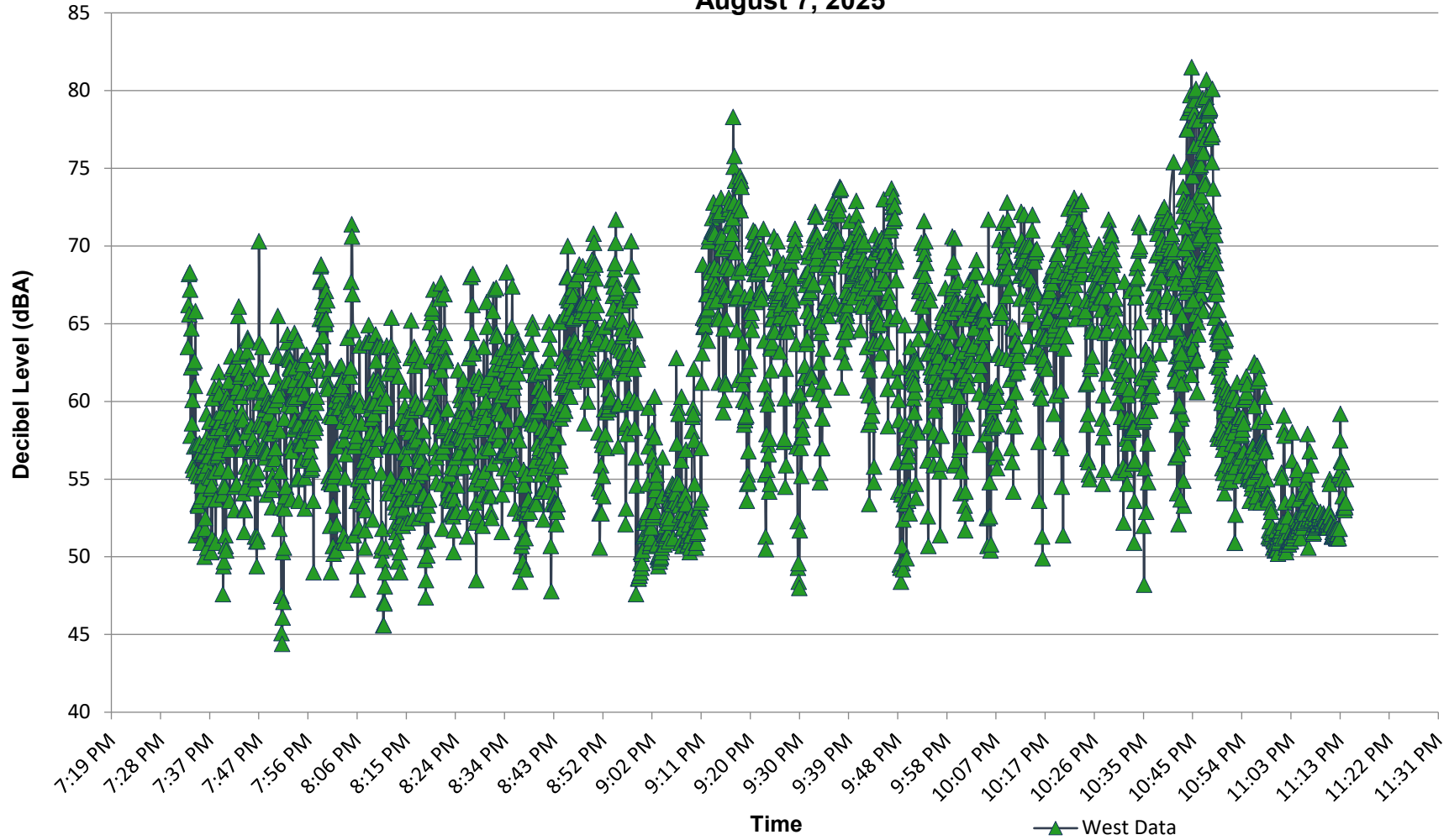
C:\Vermont Air Testing Services\Projects\Champlain Valley Exposition\2025\Mumford Concert 2025.docx

**Champlain Valley Exposition
Mumford & Son's Concert - East Boundary Sound Monitoring
August 7, 2025**



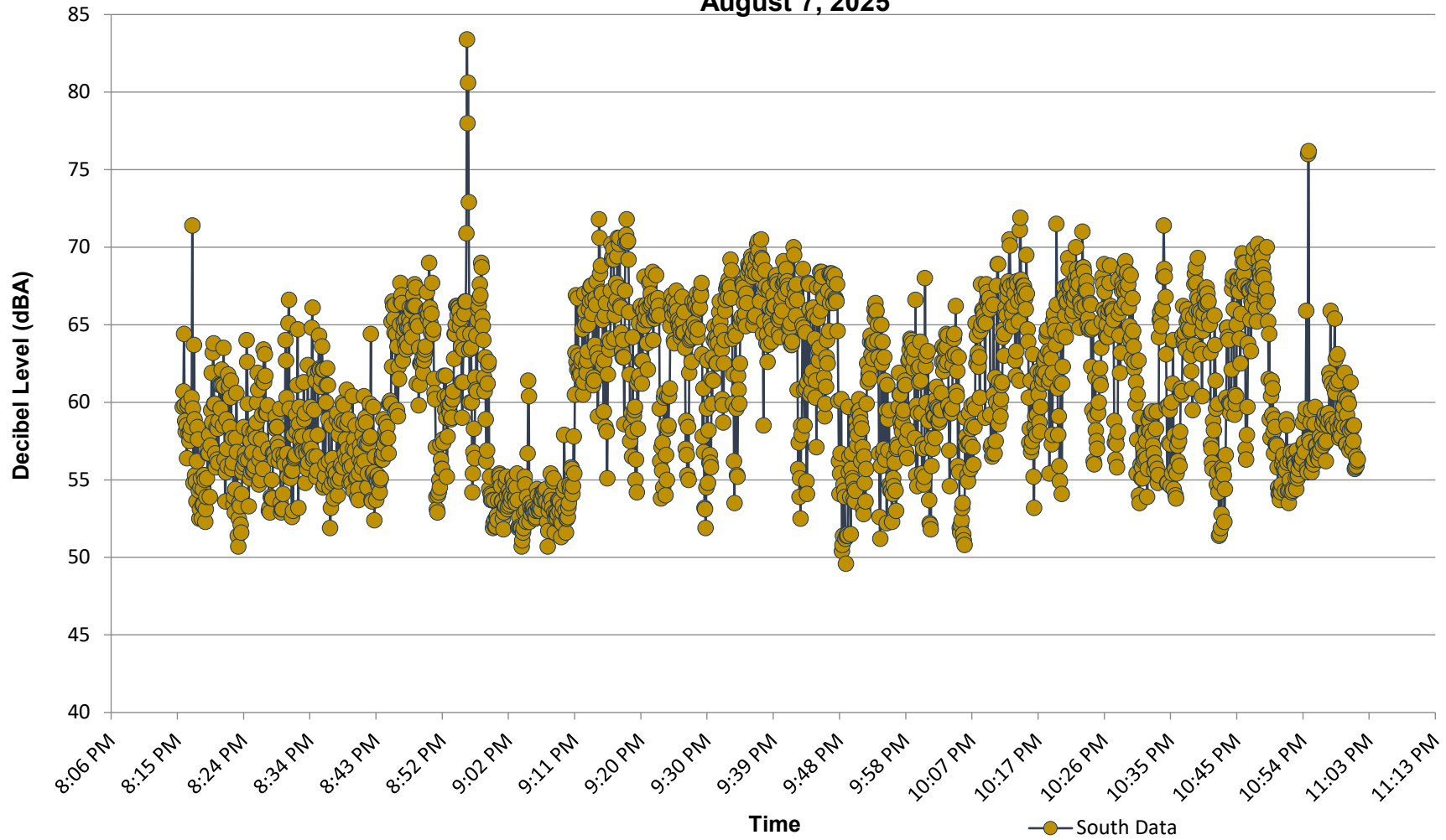
	Hour 1	Hour 2	Hour 3	Hour 4
Hourly Avg	63.3	65.5	68.7	69.9
Max Levels	77.6	81.6	81.5	81.5
Exceeding Limit (min)	0.0	0.0	0.0	0.0

**Champlain Valley Exposition
Mumford & Son's Concert - West Boundary Sound Monitoring
August 7, 2025**



	Hour 1	Hour 2	Hour 3	Hour 4
Hourly Avg	58.0	61.1	64.5	67.4
Max Levels	71.4	78.3	73.8	81.5
Exceeding Limit (min)	0.0	0.0	0.0	0.0

**Champlain Valley Exposition
Mumford & Son's Concert - South Boundary Sound Monitoring
August 7, 2025**



	Hour 1	Hour 2	Hour 3	Hour 4
Hourly Avg	57.4	60.2	62.1	60.7
Max Levels	71.4	83.4	71.9	76.2
Exceeding Limit (min)	0.0	0.1	0.0	0.0