



August 25, 2021

Robin Pierce
Development Director
Village of Essex Junction
2 Lincoln Street
Essex Junction, Vermont 05452

RE: Environmental Sound Monitoring – Modest Mouse Concert

Dear Mr. Pierce;

Vermont Air Testing Services (VATS) was retained by the Village of Essex Junction to perform perimeter environmental sound monitoring at the Champlain Valley Exposition (CVE) for selected outdoor events held at the facility throughout the 2021 summer concert season. Sound monitoring was performed using two Quest Technologies Sound Pro DL Type II integrating/logging sound level meters (SLM) setup to collect broadband sound level readings. The two SLMs used for the monitoring were configured to log average sound pressure levels every 5 seconds in the broadband or A-weighted scale. Both meter's microphones were fitted with a windscreens to minimize wind disturbance. Each meter was calibrated to a 114 decibel (dB) tone prior to the monitoring event and the calibration was checked following the sound monitoring event.

Two SLMs were deployed for the Modest Mouse Concert event held in the Midway area at the CVE facility on August 8, 2021. Both the east and west fence-line boundaries were monitored for sound levels. The east boundary meter was located approximately 200 feet south of the Green Gate along the fence line, behind the Midway stage. The west boundary meter was located along the fence-line behind the Blue Ribbon Pavilion building. The concert was a 3-hour event beginning at 7:00 pm on the Midway stage, which was oriented to the western property line. Both SLMs began collecting sound data prior to the beginning of the show until its conclusion.

The weather throughout the event was mostly cloudy skies with light winds out of the east up to 7 mph with temperatures in the mid to high 70's throughout the evening. Sound monitoring began along both boundary areas at approximately 7:00 pm. The sound monitoring concluded after the show at approximately 10:00 pm at both boundary locations. Both meters monitored the sound levels continuously throughout the event from the beginning of the concert to its conclusion. The sound monitoring data is presented for both meters in the attached charts and a summary of the monitoring data is provided below.

The maximum allowable hourly average sound level is established at 78 dBA with the maximum 5-minute average sound level set at 83 dBA. The table below presents the SLM east property line hourly average sound data, the maximum measured sound levels and the time duration of sound levels above maximum allowable sound level in minutes.

Table 1: East Property Line Data

	Hour 1	Hour 2	Hour 3	Hour 4
Hourly Average (dBA)	57.4	62.1	69.5	59.2
Max Sound Level (dBA)	71.7	75.1	75.3	75.7
Time Above Max Level (min)	0.0	0.0	0.0	0.0

The data presented above indicates the hourly average sound limits were not exceeded at any time during the concert event. The maximum sound level was not exceeded along the east property boundary throughout the event. The maximum sound limit is defined as a sustained maximum five-minute average in the established sound criteria limits (83 dBA).

The west property line sound monitoring data is presented below in the same manner as the east property line data above.

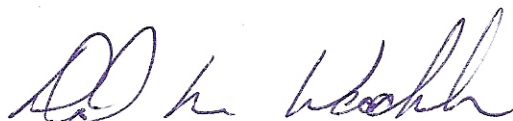
Table 2: West Property Line Data

	Hour 1	Hour 2	Hour 3
Hourly Average (dBA)	56.8	65.1	63.5
Max Sound Level (dBA)	76.5	82.7	78.3
Time Above Max Level (min)	0.0	0.0	0.0

The data listed above indicates the west side property line sound levels were all below the 78 dBA average limit during the concert monitoring event. The maximum sound levels were also maintained below the 83 dBA limit without exception.

The sound level data is presented in attached charts for the SLMs used during the Modest Mouse Concert event held on August 8, 2021. The sound levels measured throughout the event did not exceed the established sound level criteria without exception. The established sound level criteria used for monitoring outdoor events held at the Champlain Valley Exposition are defined in the Noise Indemnification Agreement between the Champlain Valley Exposition and the Village of Essex Junction.

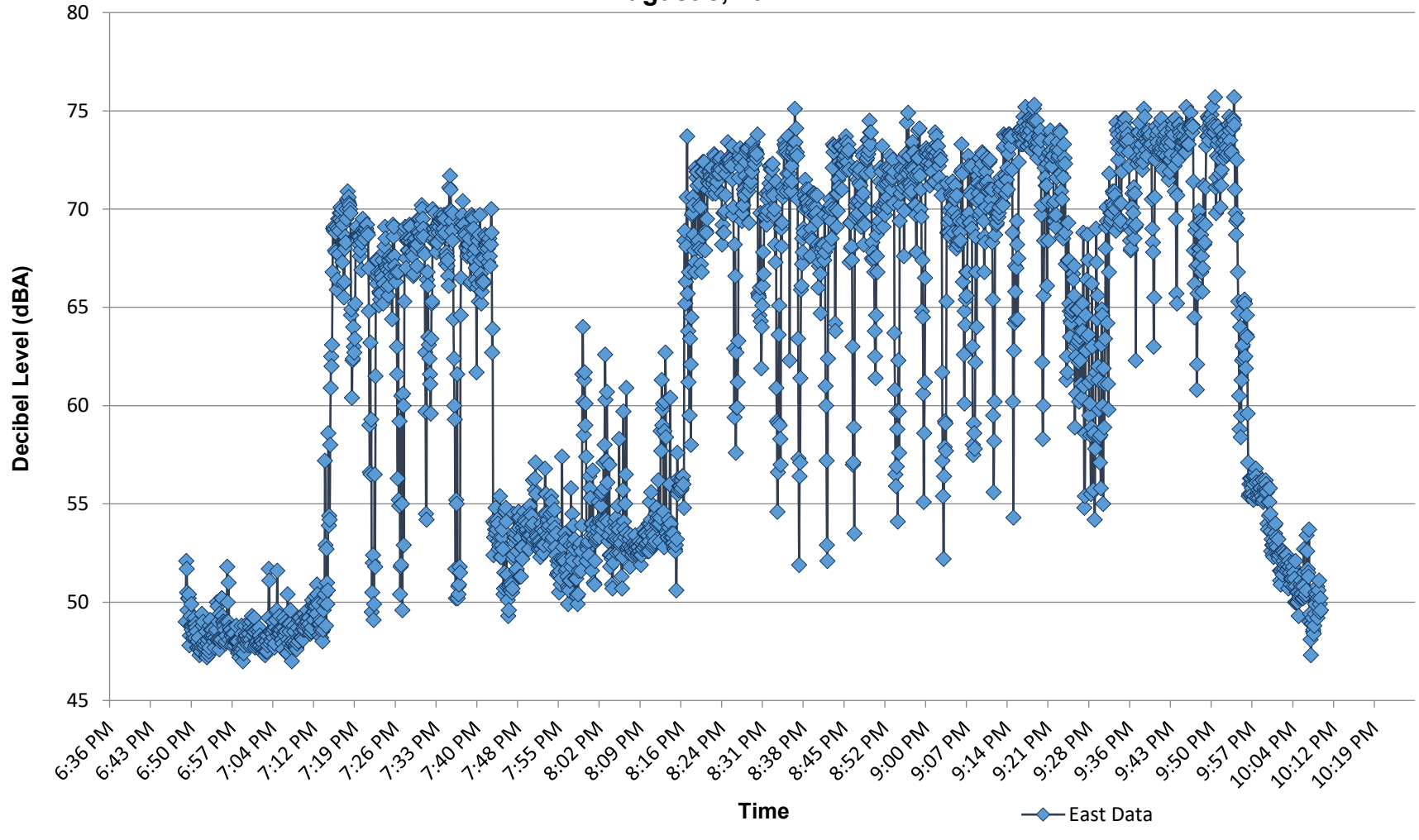
Best regards,



Principal

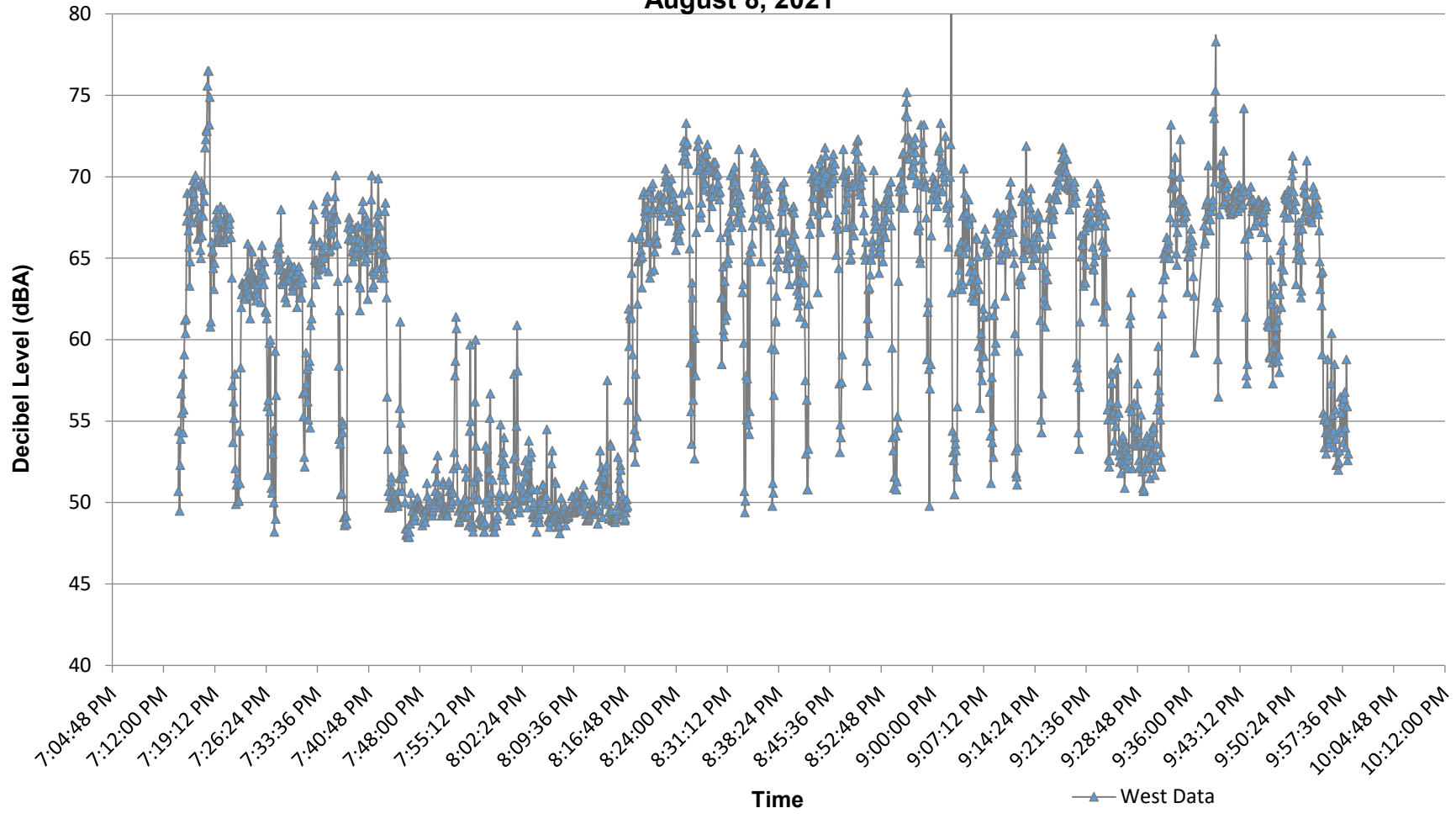
C:\Vermont Air Testing Services\Projects\Champlain Valley Exposition\2021\Modest Mouse Concert 2021.docx

**Champlain Valley Exposition
 Modest Mouse Concert - East Boundary Noise Monitoring
 August 8, 2021**



	Hour 1	Hour 2	Hour 3	Hour 4
Hourly Avg	57.4	62.1	69.5	59.2
Max Levels	71.7	75.1	75.3	75.7
Exceeding Limit (min)	0.0	0.0	0.0	0.0

**Champlain Valley Exposition
Modest Mouse Concert - West Boundary Monitoring
August 8, 2021**



	Hour 1	Hour 2	Hour 3
Hourly Avg	56.8	65.1	63.5
Max Levels	76.5	82.7	78.3
> 83 dBA (sustained time > 83 dB, in minutes)	0.0	0.0	0.0