



September 21, 2022

Robin Pierce
Development Director
Village of Essex Junction
2 Lincoln Street
Essex Junction, Vermont 05452

RE: Environmental Sound Monitoring – McCreery Concert

Dear Mr. Pierce;

Vermont Air Testing Services (VATS) was retained by the Village of Essex Junction to perform perimeter environmental sound monitoring at the Champlain Valley Exposition (CVE) for selected outdoor events held at the facility throughout the 2022 summer concert and fair season. Sound monitoring was performed using two Quest Technologies Sound Pro DL Type II integrating/logging sound level meters (SLM) setup to collect broadband sound level readings. The two SLMs used for the monitoring were configured to log average sound pressure levels every 5 seconds in the broadband or A-weighted scale. Both meter's microphones were fitted with a windscreen to minimize wind disturbance. Each meter was calibrated to a 114 decibel (dB) tone prior to the monitoring event and the calibration was checked following the sound monitoring event.

One SLM was deployed for the Scott McCreery Concert event held in the Grandstand at the CVE facility on August 26, 2022, during the Champlain Valley Fair. Only the east fence-line boundary was monitored for sound levels due to technical difficulties with the second SLM. The east boundary meter was located approximately 50 feet south of the Green Gate along the fence line, adjacent to the Midway fair rides. The concert was a nearly 3-hour music event with the monitoring covering the entire event. The music began at approximately 7:00 pm on the Grandstand stage and concluded at approximately 10:00 pm. The SLM began collecting sound data at the beginning of the show until after its conclusion.

The weather throughout the event was cloudy skies with winds out of the north up to 3 mph and temperatures upper 60's throughout the show. Sound monitoring along the eastern boundary began at 7:10 pm. The sound monitoring concluded after the show at approximately 10:00 pm along the east boundary. The East meter monitored the sound levels continuously throughout the event from the beginning of the concert to its conclusion. The sound monitoring data is presented for the East meter in the attached chart and a summary of the monitoring data is provided below.

The maximum allowable hourly average sound level is established at 78 dBA with the maximum 5-minute average sound level set at 83 dBA. The table below presents the SLM east property line hourly average sound data, the maximum measured sound level, and the time duration of sound levels above maximum allowable sound level in minutes.

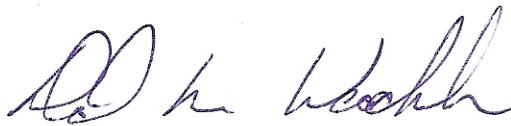
Table 1: East Property Line Data

	Hour 1	Hour 2	Hour 3
Hourly Average (dBA)	70.3	68.4	69.4
Max Sound Level (dBA)	90.4	73.5	87.4
Time Above Max Level (min)	0.5	0.0	0.3

The data presented above indicates the hourly average sound limits were not exceeded at any time during the concert event. The maximum sound level was not exceeded along the east property boundary throughout the event. The maximum sound limit is defined as a sustained maximum five-minute average in the established sound criteria limits (83 dBA).

The sound level data is presented in the attached chart for the SLM used during the Scott McCreery Concert event held on August 26, 2022 in the Exposition's grandstand. The sound levels measured throughout the event did not exceed the established sound level criteria without exception. The established sound level criteria used for monitoring outdoor events held at the Champlain Valley Exposition are defined in the Noise Indemnification Agreement between the Champlain Valley Exposition and the Village of Essex Junction.

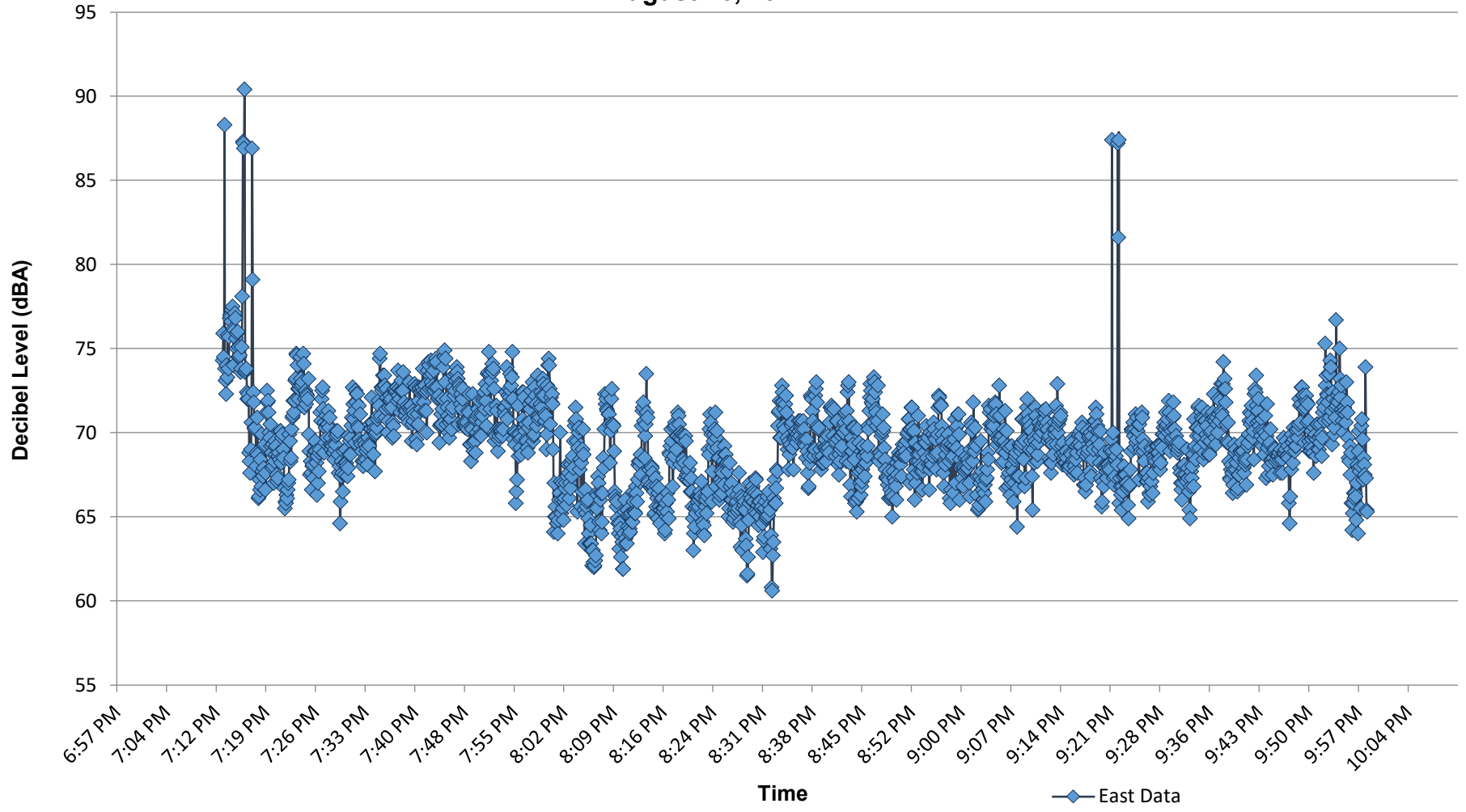
Best regards,



Principal

D:\CVE\McCreery Concert 2022.docx

**Champlain Valley Exposition
 Scott McCreery Concert - East Boundary Noise Monitoring
 August 26, 2022**



	Hour 1	Hour 2	Hour 3
Hourly Avg	70.3	68.4	69.4
Max Levels	90.4	73.5	87.4
Exceeding Limit (min)	0.5	0.0	0.3