



September 8, 2025

Christopher Yuen  
Community Development Director  
City of Essex Junction  
2 Lincoln Street  
Essex Junction, Vermont 05452

RE: Environmental Sound Monitoring – Honky Tonk Hoedown Concert

Dear Mr. Yuen;

Vermont Air Testing Services (VATS) was retained by the City of Essex Junction to perform perimeter environmental sound monitoring at the Champlain Valley Exposition (CVE) for selected outdoor events held at the facility throughout the 2025 summer concert and fair season. Sound monitoring was performed using two Quest Technologies Sound Pro DL Type II integrating/logging sound level meters (SLM) setup to collect broadband sound level readings. The two SLMs used for the monitoring were configured to log average sound pressure levels every 5 seconds in the broadband or A-weighted scale. The microphones for each meter were fitted with a windscreen to minimize wind disturbance. Both meters were calibrated to a 114 decibel (dB) tone prior to the monitoring event and the calibration was checked following the sound monitoring event.

Two SLMs were deployed for the Honky Tonk Hoedown Concert event held in the Grandstand at the CVE facility on August 26, 2025. Both the east and west fence-line boundaries were monitored for sound levels. The east boundary meter was located approximately 50 feet south of the Green Gate along the fence line, adjacent to the Midway fair rides. The second SLM, identified as the West Meter, was placed along the western property boundary on the berm adjacent to Weston Way in direct line of sight of the Grandstand sound system tower. The concert was nearly 2-hour music event with monitoring covering the entire event. The music began at approximately 7:00 pm on the Grandstand stage and concluded at approximately 9:00 pm.

The weather for the Tuesday night show was cloudy skies with a period of heavy rain with winds out of the northwest at approximately 5 mph and temperatures in the mid 60's. Sound monitoring along both the eastern and western boundaries began at approximately 7:00 pm and the sound monitoring concluded after the show ended at 9:00 pm. Both meters monitored the sound levels continuously throughout the event from the beginning of the concert to its conclusion. The sound monitoring data is presented for both meters in the attached charts and a summary of the monitoring data is provided below.

The maximum allowable hourly average sound level is established at 78 dBA with the maximum 5-minute average sound level set at 83 dBA. The table below presents the SLM east property line hourly average sound data, the maximum measured sound level, and the time duration of sound levels above maximum allowable sound level in minutes.

Table 1: East Property Line Data

	Hour 1	Hour 2
Hourly Average (dBA)	65.6	66.1
Max Sound Level (dBA)	76.1	74.4
Time Above Max Level (min)	0.0	0.0

The data presented above indicates that the hourly average sound limits were not exceeded along the east boundary at any time during the concert event. The maximum sound level was not exceeded along the east property boundary throughout the event. The maximum sound limit is defined as a sustained maximum five-minute average in the established sound criteria limits (83 dBA).

The west property line sound monitoring data is presented below in the same manner as the east property line data above.

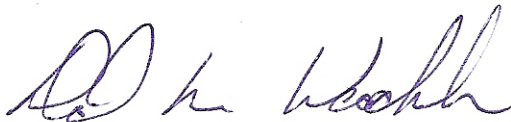
Table 2: West Property Line Data

	Hour 1	Hour 2
Hourly Average (dBA)	58.5	56.8
Max Sound Level (dBA)	77.7	74.4
Time Above Max Level (min)	0.0	0.0

The data shown above indicates the west side property line sound levels were all below the 78 dBA hourly average limit during the concert monitoring event. The maximum sound levels were also maintained below the 83 dBA limit.

The sound level data is presented in attached charts for the SLMs used during the Honky Tonk Hoedown Concert event held on August 26, 2025. The sound levels measured throughout the event did not exceed the established sound level criteria without exception. The established sound level criteria used for monitoring outdoor events held at the Champlain Valley Exposition are defined in the Noise Indemnification Agreement between the Champlain Valley Exposition and the City of Essex Junction.

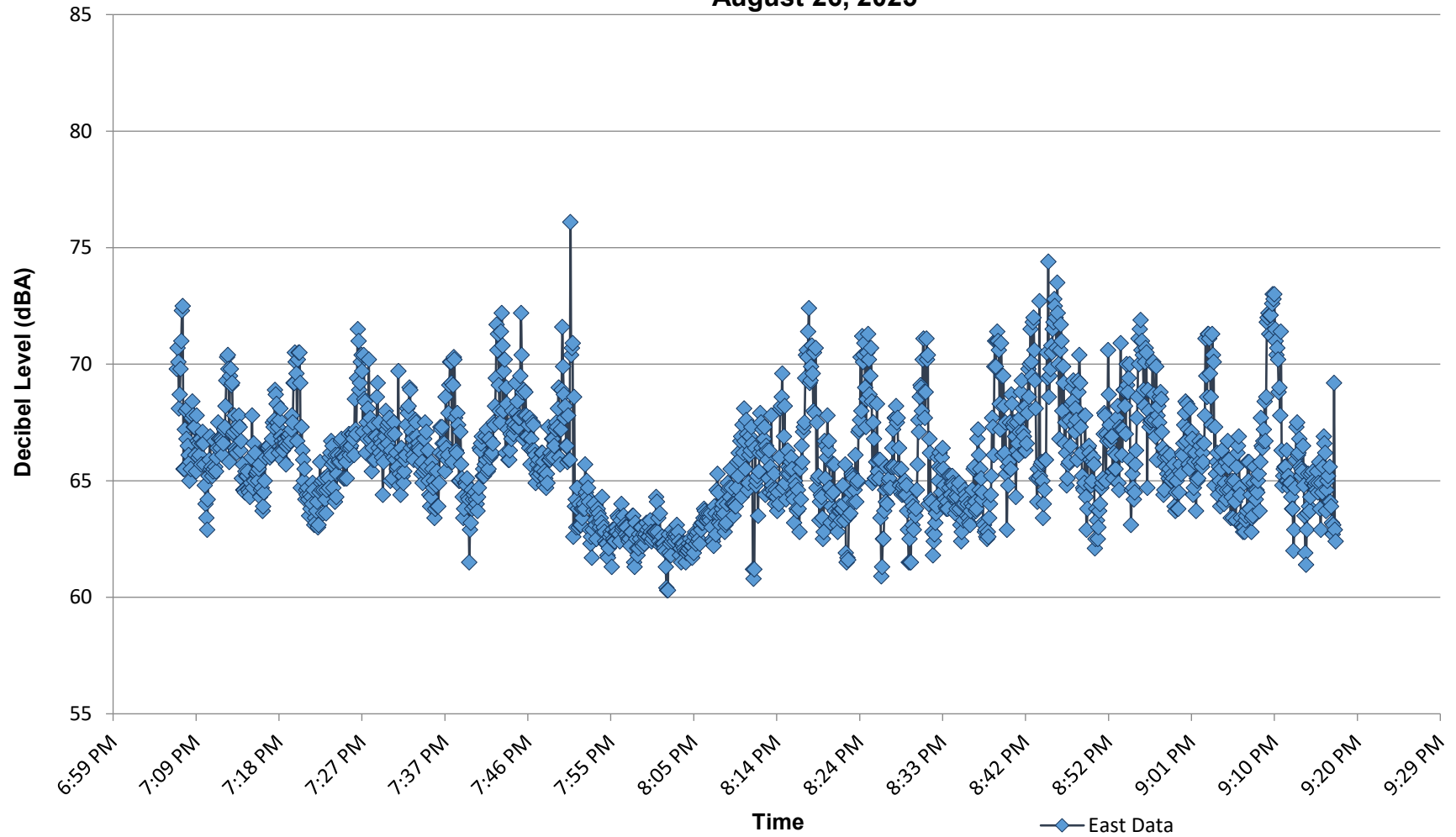
Best regards,



Principal

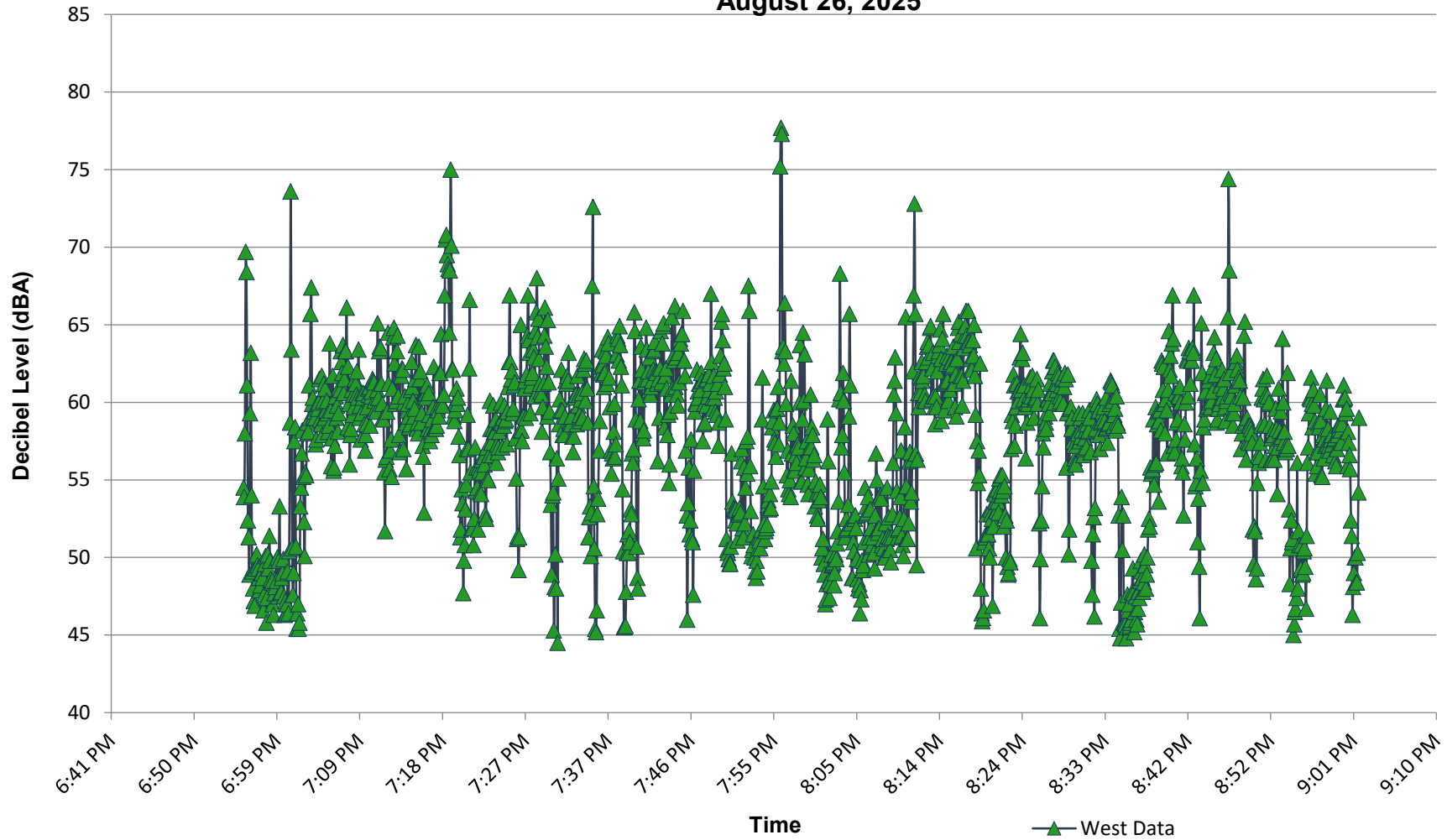
C:\Vermont Air Testing Services\Projects\Champlain Valley Exposition\2025\Honky Tonk Hoedown Concert 2025.docx

**Champlain Valley Exposition  
HonkyTonk Hoedown Concert - East Boundary Sound Monitoring  
August 26, 2025**



	Hour 1	Hour 2
Hourly Avg	65.6	66.1
Max Levels	76.1	74.4
Exceeding Limit (min)	0.0	0.0

**Champlain Valley Exposition  
Honky Tonk Hoedown Concert - West Boundary Sound Monitoring  
August 26, 2025**



	Hour 1	Hour 2
Hourly Avg	58.5	56.8
Max Levels	77.7	74.4
Exceeding Limit (min)	0.0	0.0