



June 24, 2022

Robin Pierce
Development Director
Village of Essex Junction
2 Lincoln Street
Essex Junction, Vermont 05452

RE: Environmental Sound Monitoring – Bon Iver Concert

Dear Mr. Pierce;

Vermont Air Testing Services (VATS) was retained by the Village of Essex Junction to perform perimeter environmental sound monitoring at the Champlain Valley Exposition (CVE) for selected outdoor events held at the facility throughout the 2022 summer concert season. Sound monitoring was performed using two Quest Technologies Sound Pro DL Type II integrating/logging sound level meters (SLM) setup to collect broadband sound level readings. The two SLMs used for the monitoring were configured to log average sound pressure levels every 5 seconds in the broadband or A-weighted scale. Both meter's microphones were fitted with a windscreens to minimize wind disturbance. Each meter was calibrated to a 114 decibel (dB) tone prior to the monitoring event and the calibration was checked following the sound monitoring event.

Two SLMs were deployed for the Bon Iver Concert event held in the Midway area at the CVE facility on June 8, 2022. Both the east and west fence-line boundaries were monitored for sound levels. The east boundary meter was located approximately 200 feet south of the Green Gate along the fence line, behind the Midway stage. The west boundary meter was located along the fence-line behind the Blue-Ribbon Pavilion building. The concert was a nearly 3-hour music event with the monitoring covering the entire 3 hours. The concert stage is oriented facing the western property line. The music began at approximately 7:00 pm on the Midway stage with an opening act and concluded at approximately 10 pm. Both SLMs began collecting sound data prior to the beginning of the show until after its conclusion.

The weather throughout the event was cloudy skies with winds out of the northwest up to 6 mph and temperatures ranging from the mid 70's at the beginning of the show to the high 60's by the conclusion of the show. Sound monitoring along the western boundary began at 7 pm with the eastern boundary monitoring beginning approximately 6:50 pm on June 8th. The sound monitoring concluded after the show at approximately 10:00 pm along both boundaries. Both meters monitored the sound levels continuously throughout the event from the beginning of the concert to its conclusion. The sound monitoring data is presented for both meters in the attached charts and a summary of the monitoring data is provided below.

The maximum allowable hourly average sound level is established at 78 dBA with the maximum 5-minute average sound level set at 83 dBA. The table below presents the SLM east property line hourly average sound data, the maximum measured sound level and the time duration of sound levels above maximum allowable sound level in minutes.

Table 1: East Property Line Data

	Hour 1	Hour 2	Hour 3
Hourly Average (dBA)	60.5	63.6	67.8
Max Sound Level (dBA)	69.2	77.8	78.0
Time Above Max Level (min)	0.0	0.0	0.0

The data presented above indicates the hourly average sound limits were not exceeded at any time during the concert event. The maximum sound level was not exceeded along the east property boundary throughout the event. The maximum sound limit is defined as a sustained maximum five-minute average in the established sound criteria limits (83 dBA).

The west property line sound monitoring data is presented below in the same manner as the east property line data above.

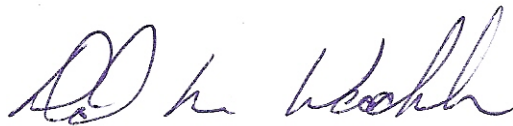
Table 2: West Property Line Data

	Hour 1	Hour 2	Hour 3
Hourly Average (dBA)	61.1	69.3	74.5
Max Sound Level (dBA)	75.5	85.4	87.4
Time Above Max Level (min)	0.0	0.8	0.7

The data listed above indicates the west side property line sound levels were all below the 78 dBA average limit during the concert monitoring event. The maximum sound levels were also maintained below the 83 dBA limit without exception.

The sound level data is presented in attached charts for the SLMs used during the Bon Iver Concert event held on June 8, 2022. The sound levels measured throughout the event did not exceed the established sound level criteria without exception. The established sound level criteria used for monitoring outdoor events held at the Champlain Valley Exposition are defined in the Noise Indemnification Agreement between the Champlain Valley Exposition and the Village of Essex Junction.

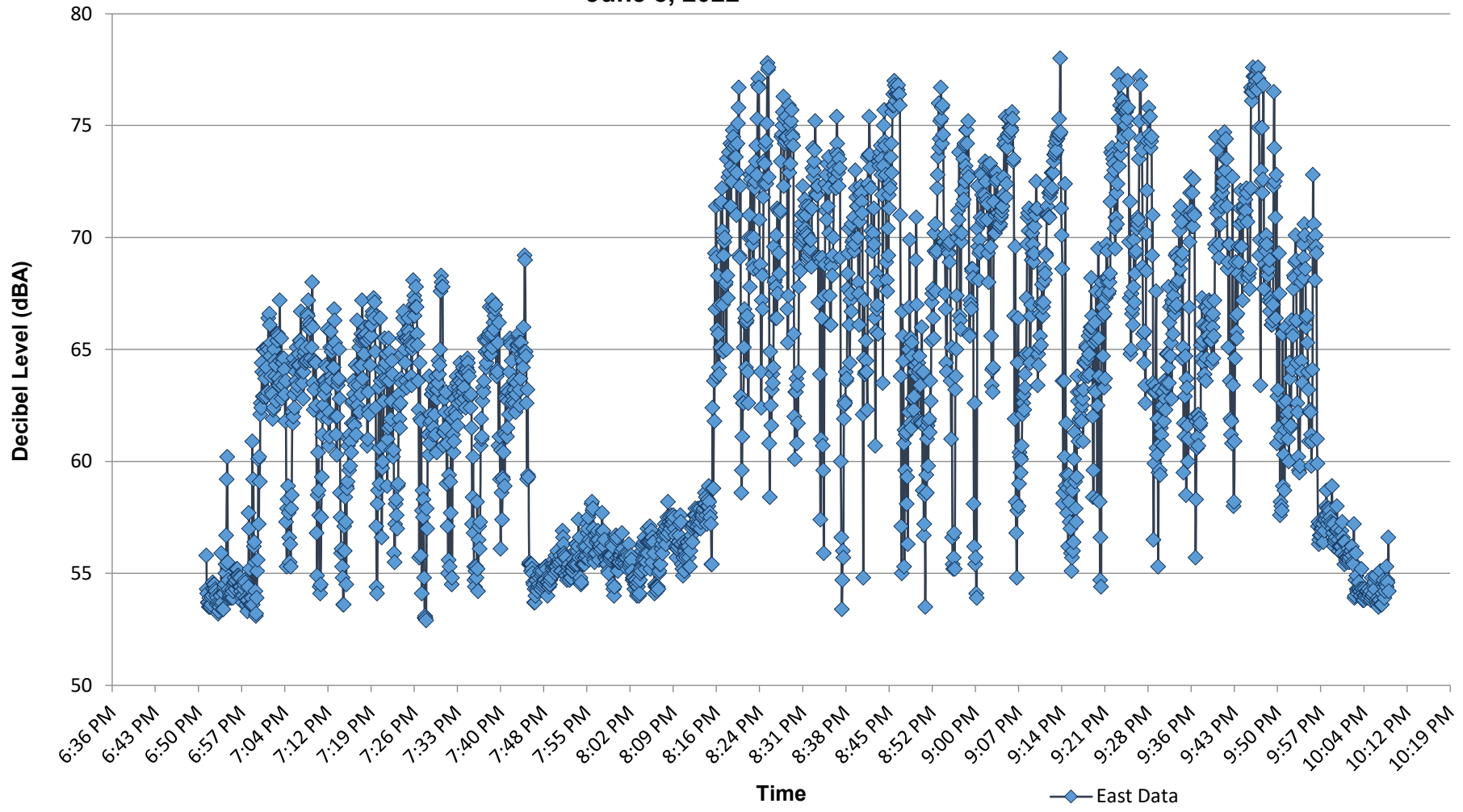
Best regards,



Principal

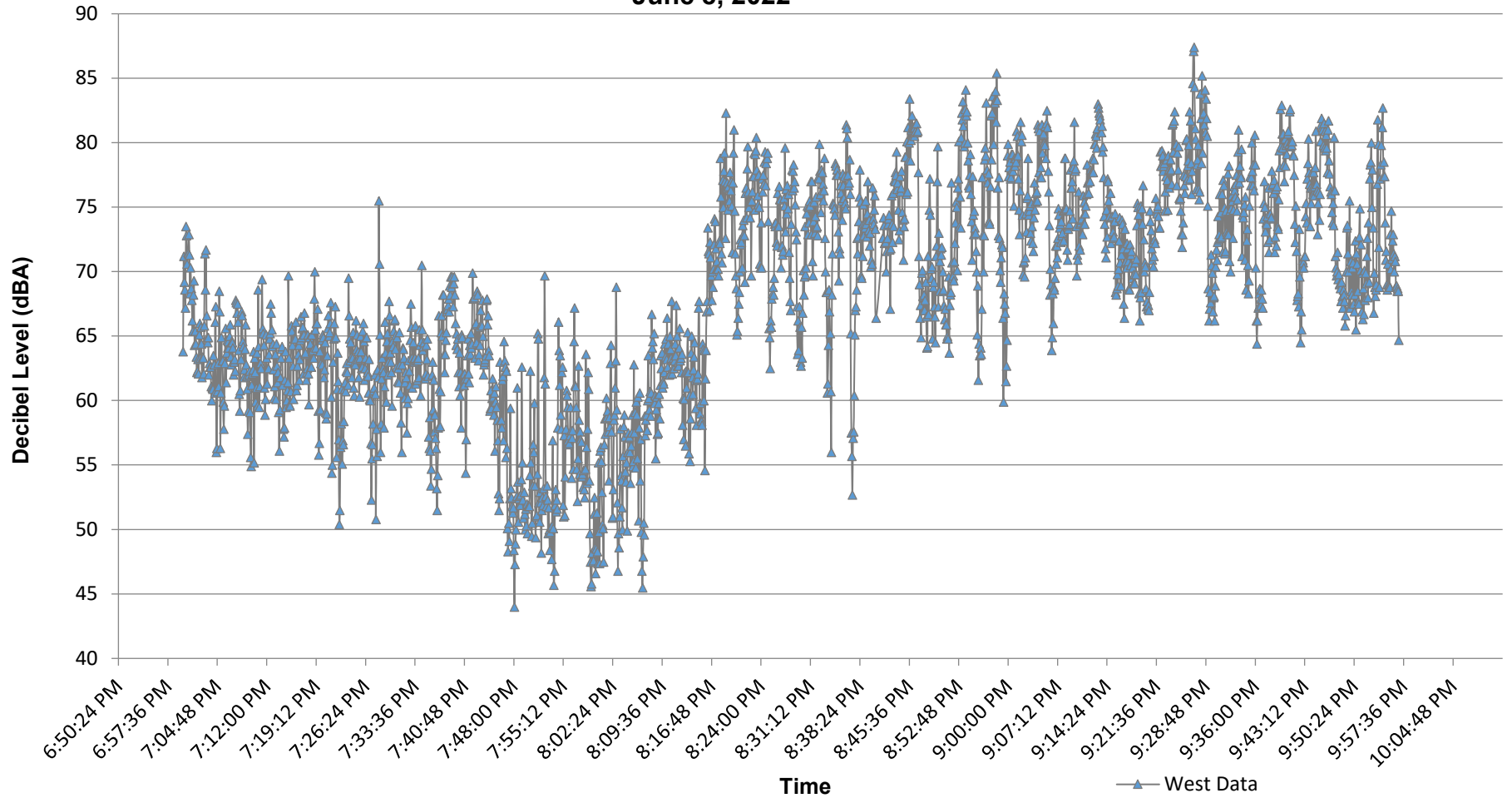
D:\CVE\Bon Iver Concert 2022.docx

**Champlain Valley Exposition
Bon Iver Concert - East Boundary Noise Monitoring
June 8, 2022**



	Hour 1	Hour 2	Hour 3
Hourly Avg	60.5	63.6	67.8
Max Levels	69.2	77.8	78.0
Exceeding Limit (min)	0.0	0.0	0.0

**Champlain Valley Exposition
Bon Iver Concert - West Boundary Monitoring
June 8, 2022**



	Hour 1	Hour 2	Hour 3
Hourly Avg	61.1	69.3	74.5
Max Levels	75.5	85.4	87.4
> 83 dBA (sustained time > 83 dB, in minutes)	0.0	0.8	0.7