



June 30, 2026

Christopher Yuen
Community Development Director
City of Essex Junction
2 Lincoln Street
Essex Junction, Vermont 05452

RE: Environmental Sound Monitoring – BMW MOA Rally 2026

Dear Mr. Yuen;

Vermont Air Testing Services (VATS) was retained by the City of Essex Junction to perform perimeter environmental sound monitoring at the Champlain Valley Exposition (CVE) for selected outdoor events held at the facility throughout the 2026 summer outdoor event season. Sound monitoring was performed using Quest Technologies Sound Pro DL Type II integrating/logging sound level meter (SLM) setup to collect broadband sound level readings. The SLM used for the monitoring was configured to log average sound pressure levels every 5 seconds in the broadband or A-weighted scale. The SLM microphone was fitted with a windscreen to minimize wind disturbance. The SLM was calibrated to a 114 decibel (dB) tone prior to and following the sound monitoring event.

The BMW MOA Rally hosted a musical event each evening on stage erected in front of the Grandstand, across the Ware Administration Building. Two SLMs were deployed each evening for the BMW MOA musical event held at the CVE starting at 7 pm each evening from Wednesday, June 10th through Saturday, June 13th. One SLM was placed along the eastern boundary fence line approximately 100 feet south of the Green Gate entrance. The second SLM was placed along south fence line adjacent to Pearl Street in direct line of sight to the sound stage. The music was monitored for approximately 2 hours on Wednesday and Thursday evenings and for approximately 4 hours for both Friday and Saturday evenings.

The weather on each evening varied greatly with rain throughout most of the Wednesday night show with temperatures in the mid 70's. Thursday evening's weather was mostly cloudy, calm winds and temperatures in the mid 80's. Friday and Saturday evenings saw fair skies, winds out of the west up to 10 mph and temperatures ranging from the low 80's to low 70's as the evening progressed. Sound monitoring began at approximately 7:00 pm each night and concluded at around 9 pm on Wednesday and Thursday evenings and at around 11 pm on Friday and Saturday evening. The sound monitoring data is presented in the attached charts, and a summary of the monitoring data is provided below.

All Category B sound waived events use the maximum hourly average sound level of 78 dBA with the maximum 5-minute average sound level defined at 83 dBA throughout the event. The table below presents the SLM property line hourly average sound data, the maximum sound levels and the time duration of sound levels above maximum allowable noise level in minutes. The tables below present the Wednesday night SLM property line hourly average sound data, the maximum sound levels and the time duration of sound levels above maximum allowable sound level in minutes.

Wednesday Night East Boundary – June 10th

| | 1 | 2 |
|----------------------------|------|------|
| Hourly Average (dBA) | 57.6 | 57.3 |
| Max Sound Level (dBA) | 72.5 | 75.6 |
| Time Above Max Level (min) | 0.0 | 0.0 |

Wednesday Night South Boundary – June 10th

| | 1 | 2 |
|----------------------------|------|------|
| Hourly Average (dBA) | 65.8 | 64.5 |
| Max Sound Level (dBA) | 76.2 | 71.5 |
| Time Above Max Level (min) | 0.0 | 0.0 |

The data presented above indicates the hourly average and maximum sound limits were not exceeded at any time during the monitoring event.

The Thursday night monitoring data is presented on the following tables:

Thursday Night East Boundary – June 11th

| | 1 | 2 |
|----------------------------|------|------|
| Hourly Average (dBA) | 57.2 | 55.2 |
| Max Sound Level (dBA) | 72.7 | 73.4 |
| Time Above Max Level (min) | 0.0 | 0.0 |

Thursday Night South Boundary – June 11th

| | 1 | 2 |
|----------------------------|------|------|
| Hourly Average (dBA) | 62.1 | 61.9 |
| Max Sound Level (dBA) | 77.8 | 81.5 |
| Time Above Max Level (min) | 0.0 | 0.0 |

The Thursday evening the data presented above indicates the hourly average and maximum sound limits were not exceeded at any time during the monitoring event.

The Friday night monitoring data is presented on the following tables:

Friday Night East Boundary – June 12th

| | 1 | 2 | 3 | 4 |
|----------------------------|------|------|------|------|
| Hourly Average (dBA) | 59.4 | 57.6 | 59.9 | 58.3 |
| Max Sound Level (dBA) | 81.8 | 70.5 | 77.2 | 74.9 |
| Time Above Max Level (min) | 0.0 | 0.0 | 0.0 | 0.0 |

Friday Night South Boundary – June 12th

| | 1 | 2 | 3 | 4 |
|----------------------------|------|------|------|------|
| Hourly Average (dBA) | 64.4 | 61.0 | 62.9 | 52.1 |
| Max Sound Level (dBA) | 77.7 | 73.3 | 74.5 | 71.6 |
| Time Above Max Level (min) | 0.0 | 0.0 | 0.0 | 0.0 |

As with the previous evenings, the Friday night data presented above indicates the hourly average and maximum sound limits were not exceeded at any time during the monitoring event.

The Saturday night monitoring data is presented on the following tables:

Saturday Night East Boundary – June 13th

| | 1 | 2 | 3 | 4 |
|----------------------------|------|------|------|------|
| Hourly Average (dBA) | 58.8 | 58.8 | 59.0 | 58.4 |
| Max Sound Level (dBA) | 74.2 | 73.4 | 72.3 | 70.2 |
| Time Above Max Level (min) | 0.0 | 0.0 | 0.0 | 0.0 |

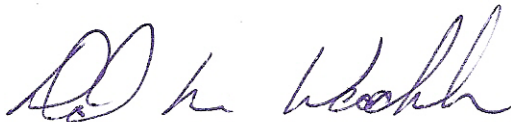
Saturday Night South Boundary – June 13th

| | 1 | 2 | 3 | 4 |
|----------------------------|------|------|------|------|
| Hourly Average (dBA) | 52.9 | 43.1 | 45.1 | 41.2 |
| Max Sound Level (dBA) | 77.7 | 60.7 | 48.8 | 66.3 |
| Time Above Max Level (min) | 0.0 | 0.0 | 0.0 | 0.0 |

Again, the Saturday night data presented above indicates the hourly average and maximum sound limits were not exceeded at any time during the monitoring event.

The sound level data is presented in attached charts for the SLM used during the BMW MOA Rally with sound level monitoring on June 10, 2026, through June 13, 2026. The sound levels measured throughout the event did not exceed the established sound level criteria without exception. The established sound level criteria used for monitoring outdoor events held at the Champlain Valley Exposition are defined in the Sound Indemnification Agreement between the Champlain Valley Exposition and the City of Essex Junction.

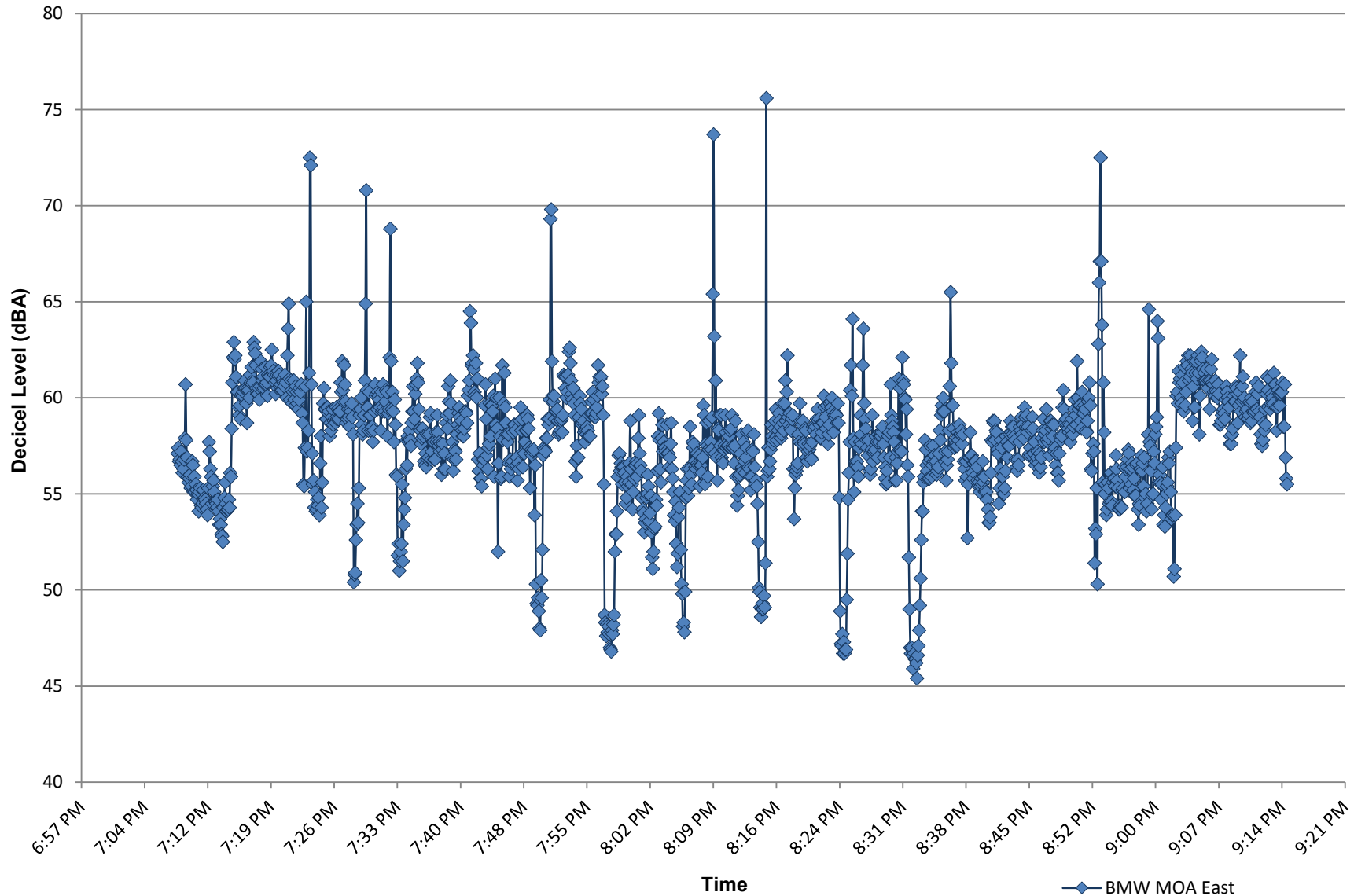
Best regards,



Principal

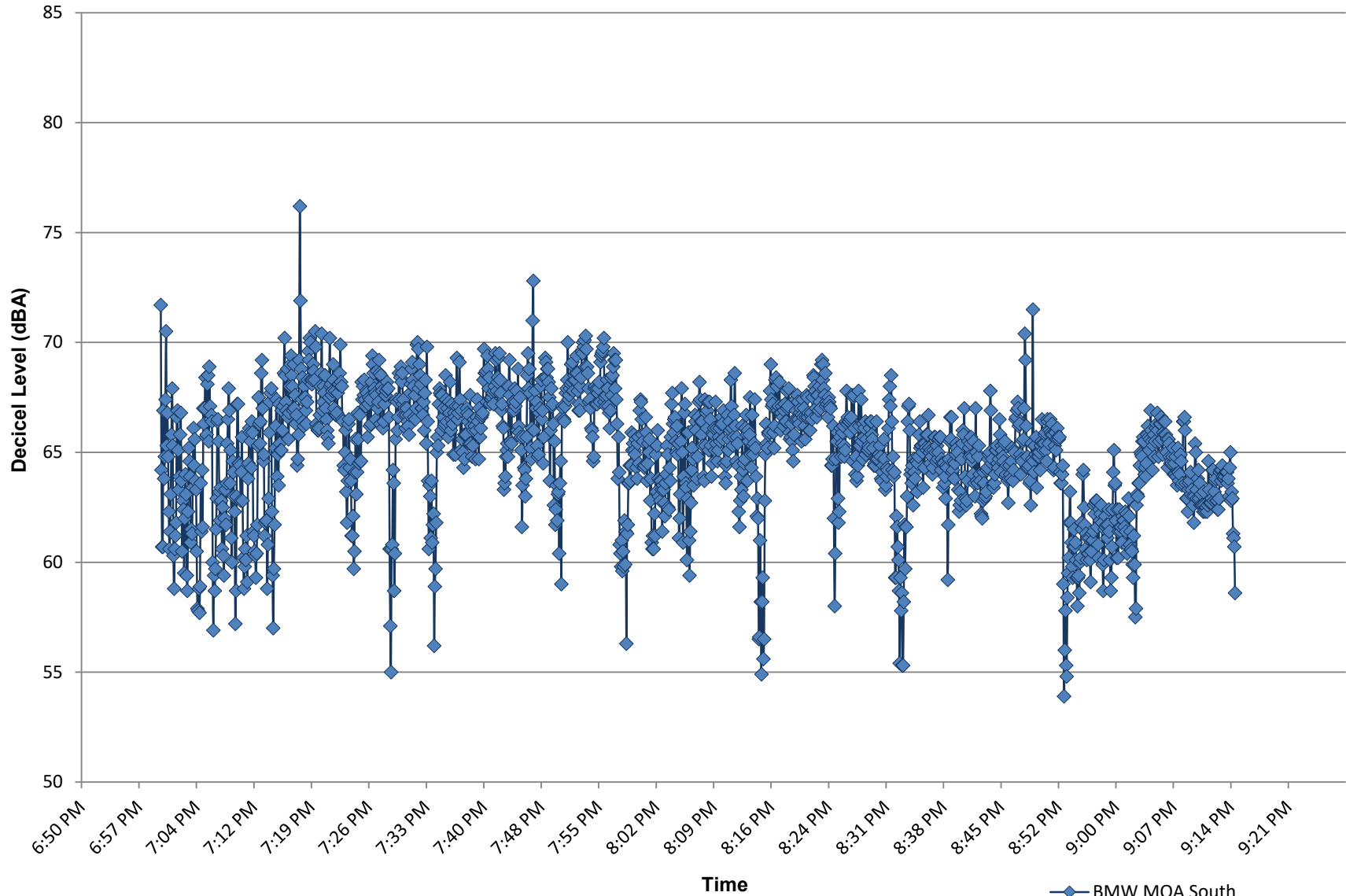
C:\Vermont Air Testing Services\Projects\Champlain Valley Exposition\2026\BMW MOA Rally 2026.docx

**Champlain Valley Exposition
BMW MOA - East Boundary Noise Monitoring
Wednesday, June 10, 2026**



| | Hour 1 | Hour 2 |
|-----------------------|--------|--------|
| Hourly Avg | 57.6 | 57.3 |
| Max Levels | 72.5 | 75.6 |
| Exceeding Limit (min) | 0.0 | 0.0 |

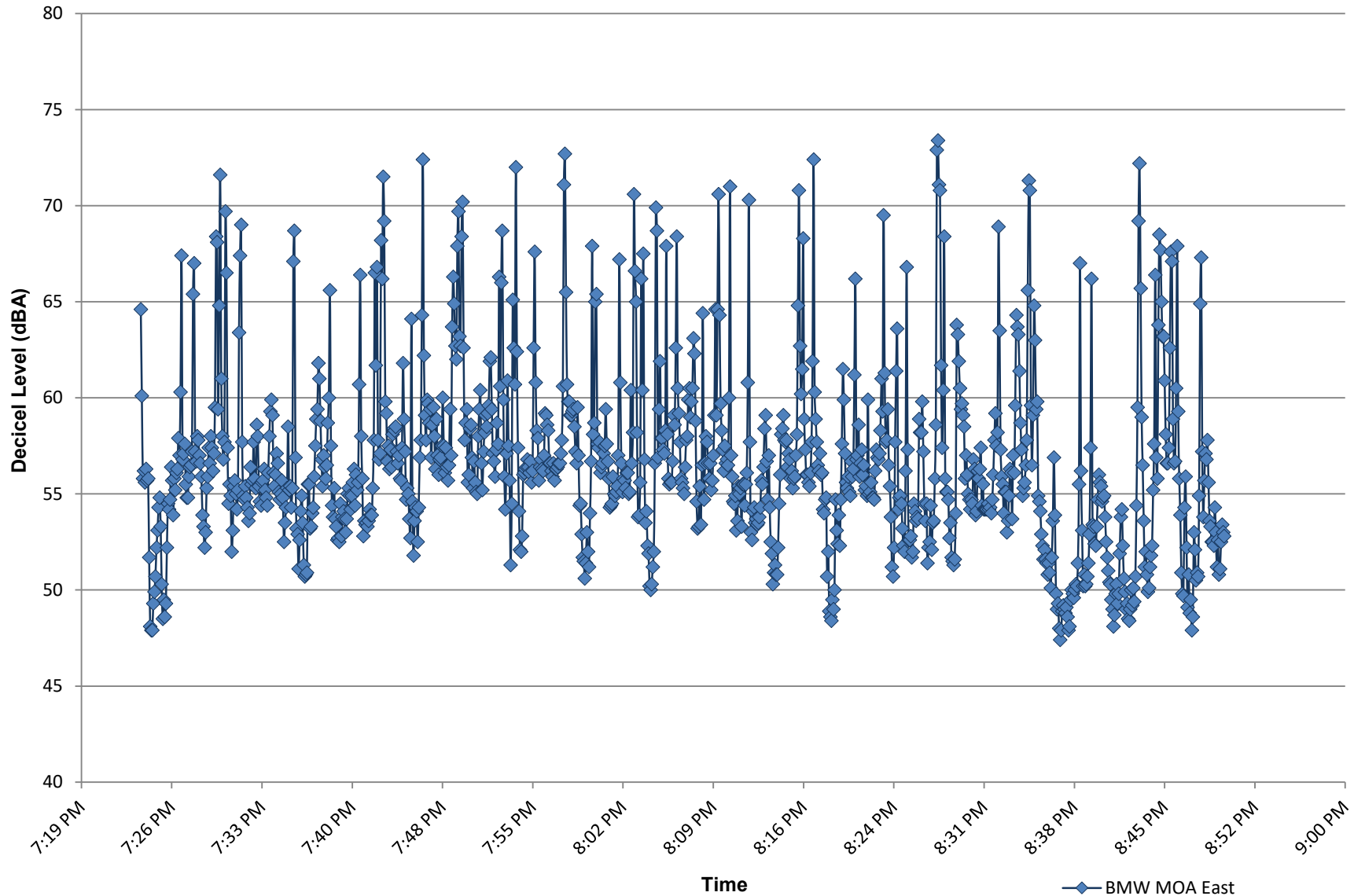
**Champlain Valley Exposition
BMW MOA - South Boundary Noise Monitoring
Wednesday, June 10, 2026**



—◆— BMW MOA South

| | Hour 1 | Hour 2 |
|-----------------------|--------|--------|
| Hourly Avg | 65.8 | 64.5 |
| Max Levels | 76.2 | 71.5 |
| Exceeding Limit (min) | 0.0 | 0.0 |

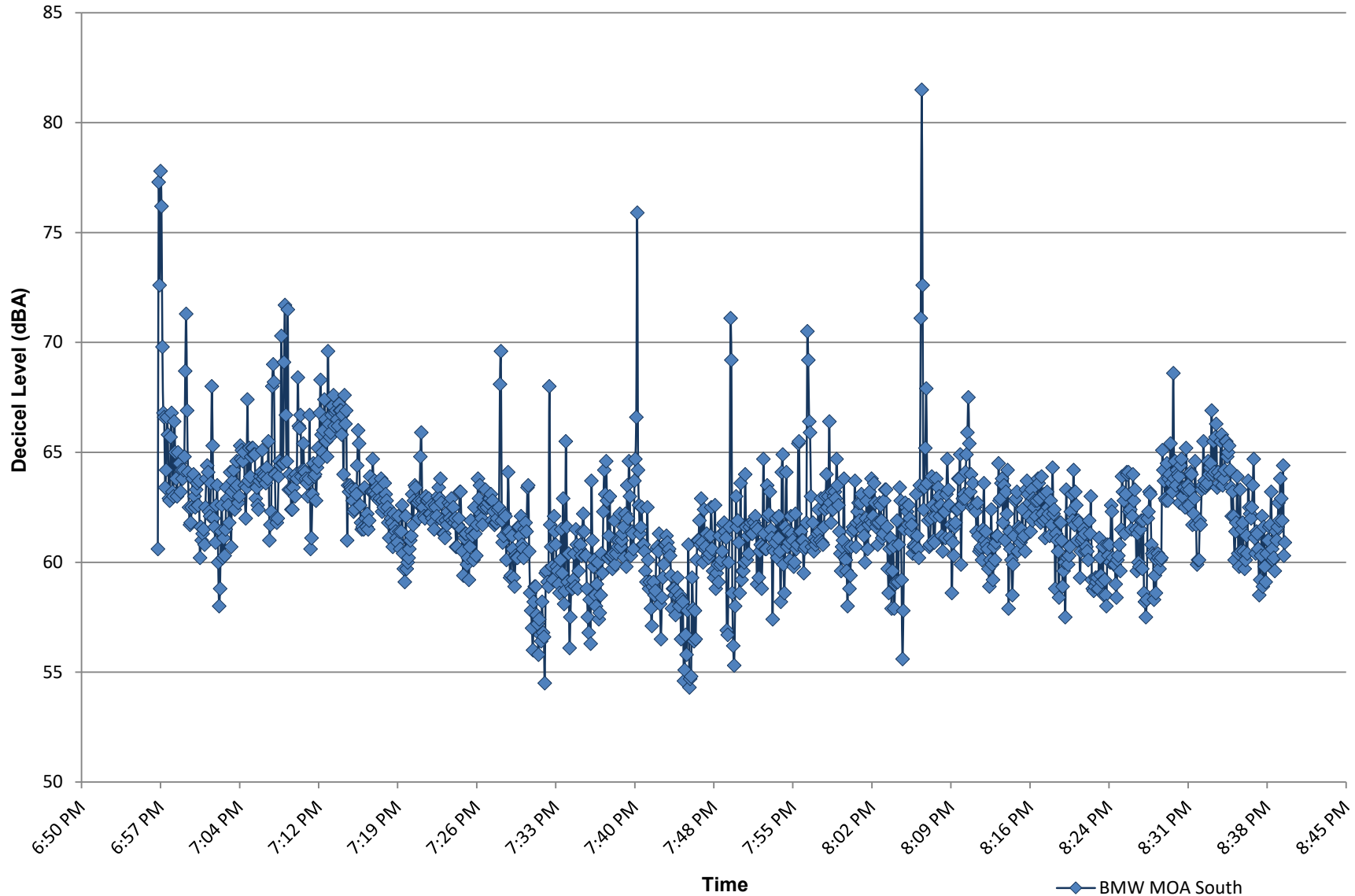
**Champlain Valley Exposition
BMW MOA - East Boundary Noise Monitoring
Thursday, June 11, 2026**



| | Hour 1 | Hour 2 |
|-----------------------|--------|--------|
| Hourly Avg | 57.2 | 55.2 |
| Max Levels | 72.7 | 73.4 |
| Exceeding Limit (min) | 0.0 | 0.0 |

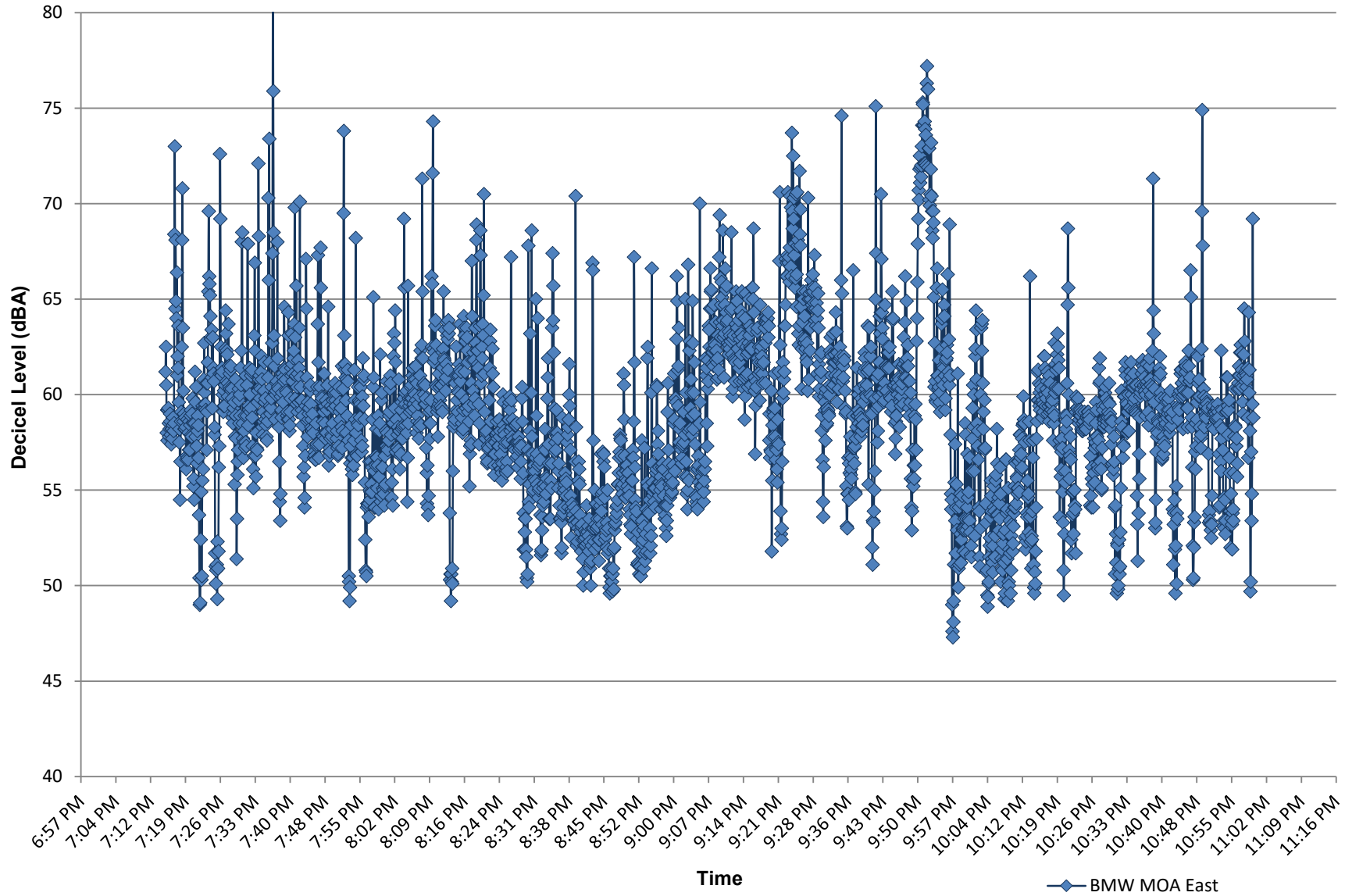
—◆— BMW MOA East

**Champlain Valley Exposition
BMW MOA - South Boundary Noise Monitoring
Thursday, June 11, 2026**



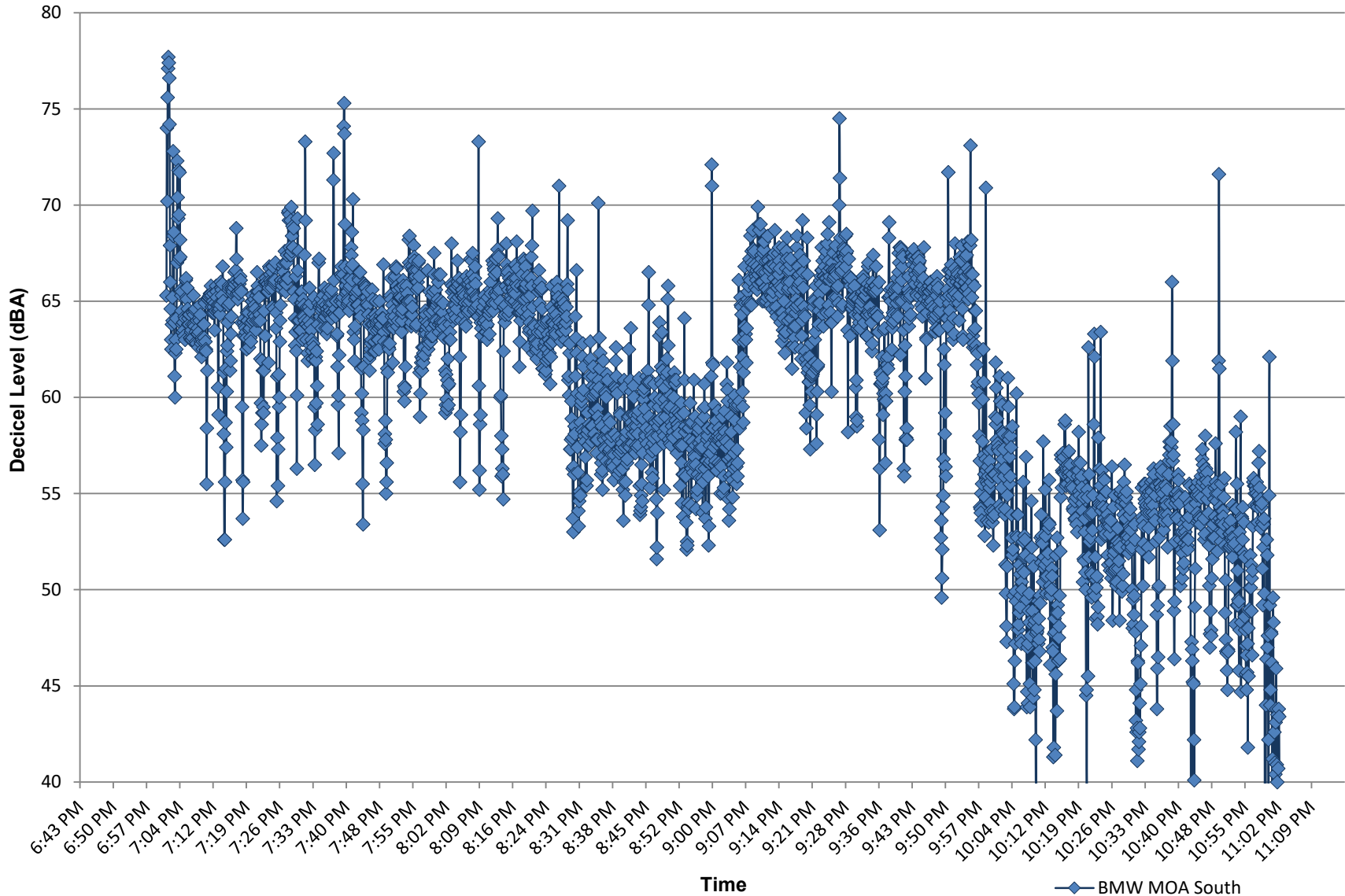
| | Hour 1 | Hour 2 |
|-----------------------|--------|--------|
| Hourly Avg | 62.1 | 61.9 |
| Max Levels | 77.8 | 81.5 |
| Exceeding Limit (min) | 0.0 | 0.0 |

**Champlain Valley Exposition
BMW MOA - East Boundary Noise Monitoring
Friday, June 12, 2026**



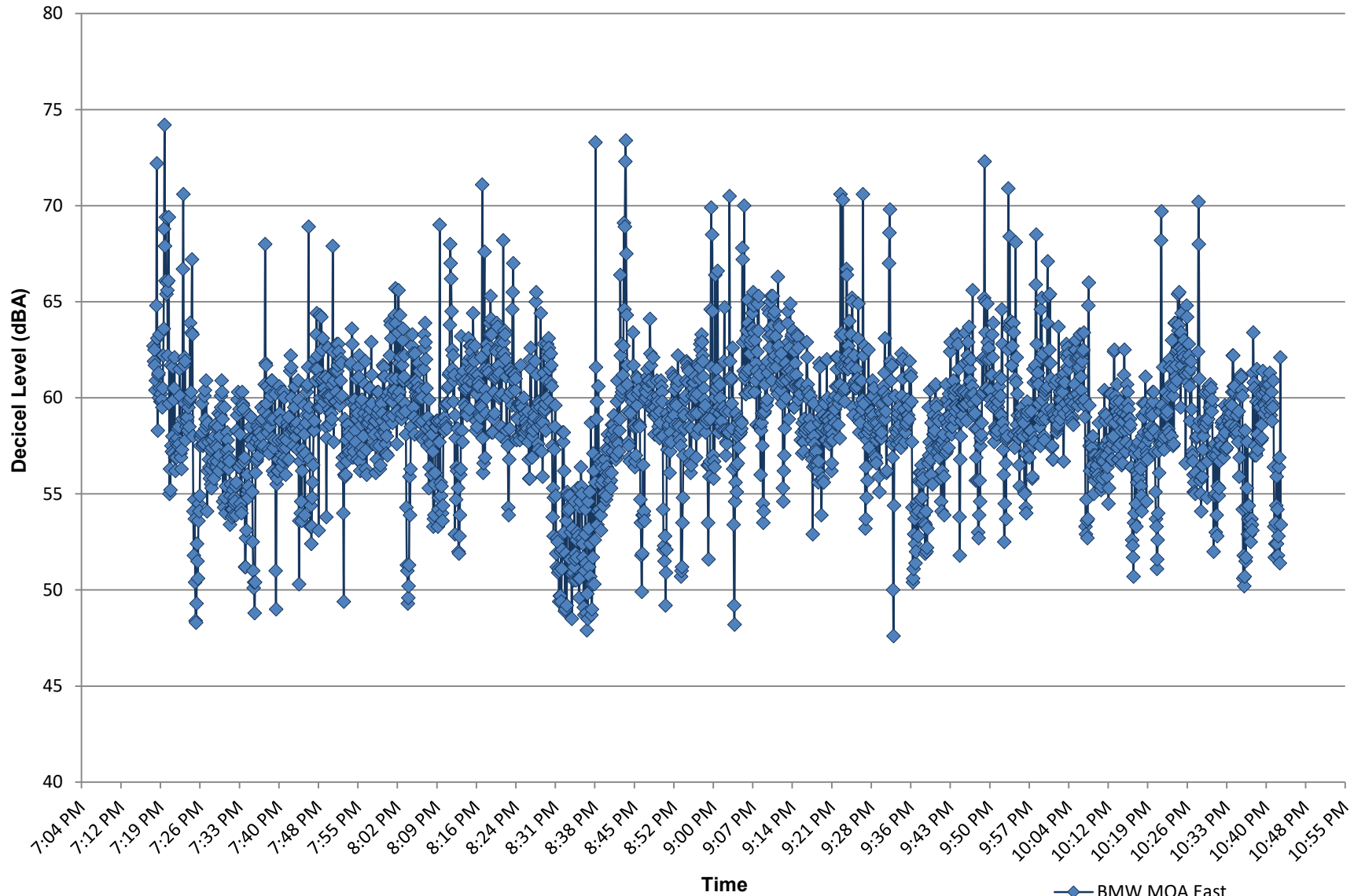
| | Hour 1 | Hour 2 | Hour 3 | Hour 4 |
|-----------------------|--------|--------|--------|--------|
| Hourly Avg | 59.4 | 57.6 | 59.9 | 58.3 |
| Max Levels | 81.8 | 70.5 | 77.2 | 74.9 |
| Exceeding Limit (min) | 0.0 | 0.0 | 0.0 | 0.0 |

**Champlain Valley Exposition
BMW MOA - South Boundary Noise Monitoring
Friday, June 12, 2026**



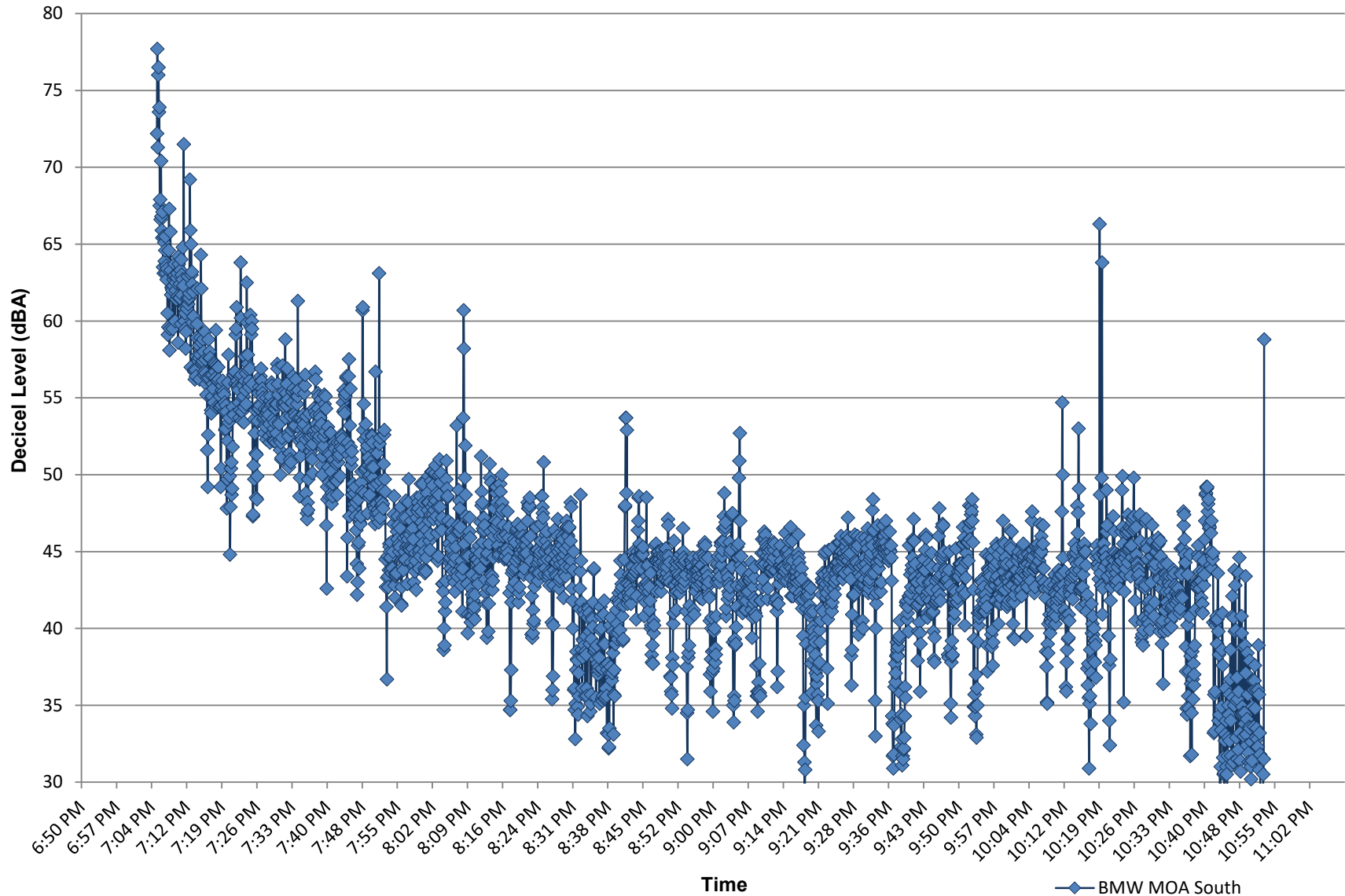
| | Hour 1 | Hour 2 | Hour 3 | Hour 4 |
|-----------------------|--------|--------|--------|--------|
| Hourly Avg | 64.4 | 61.0 | 62.9 | 52.1 |
| Max Levels | 77.7 | 73.3 | 74.5 | 71.6 |
| Exceeding Limit (min) | 0.0 | 0.0 | 0.0 | 0.0 |

**Champlain Valley Exposition
BMW MOA - East Boundary Noise Monitoring
Saturday, June 13, 2026**



| | Hour 1 | Hour 2 | Hour 3 | Hour 4 |
|-----------------------|--------|--------|--------|--------|
| Hourly Avg | 58.8 | 58.8 | 59.0 | 58.4 |
| Max Levels | 74.2 | 73.4 | 72.3 | 70.2 |
| Exceeding Limit (min) | 0.0 | 0.0 | 0.0 | 0.0 |

**Champlain Valley Exposition
BMW MOA - South Boundary Noise Monitoring
Saturday, June 13, 2026**



| | Hour 1 | Hour 2 | Hour 3 | Hour 4 |
|-----------------------|--------|--------|--------|--------|
| Hourly Avg | 52.9 | 43.1 | 45.1 | 41.2 |
| Max Levels | 77.7 | 60.7 | 48.4 | 66.3 |
| Exceeding Limit (min) | 0.0 | 0.0 | 0.0 | 0.0 |