

Essex Junction Wi-Fi

September 7, 2011



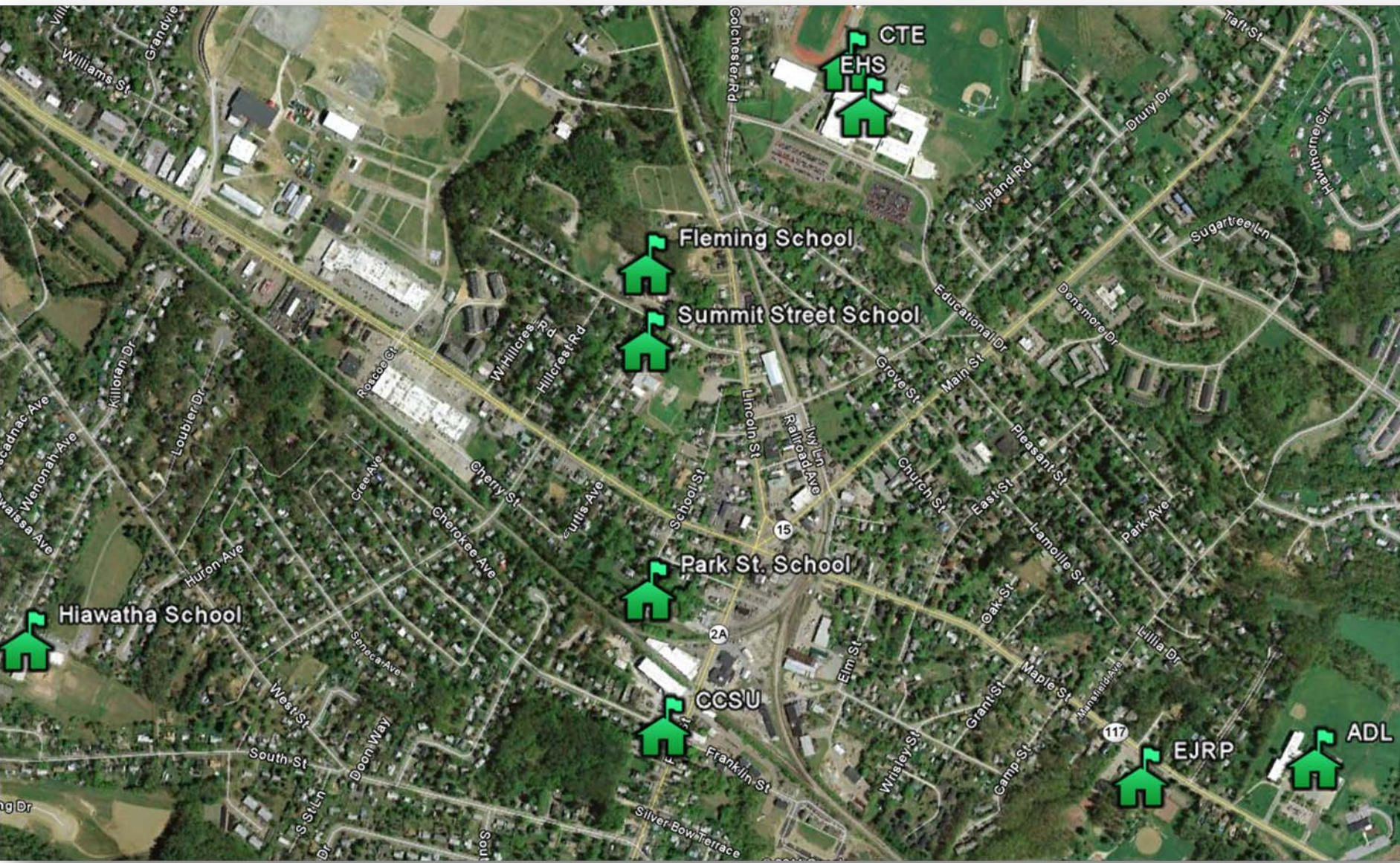
Introduction

- Given EJ at +/- 5 sq. miles, with 9,271 citizens (2010), **is a joint effort for village-wide Wi-Fi a shared interest?**



Current School Status

- Continue to trend: uptick percentage of children living in poverty
- Expansive Wi-Fi access in all Essex Junction school district facilities
- 1:1 computing has become the focus of some area school districts
- 21st century education philosophy



Interests in Wi-Fi

- **School**

- Equity
- 24/7 learning
- Access



- **Village**

- Quality of life
- Economic development
- Other?

Resources

- VT Council on Rural Development
- Snelling Center for Government
- VT League of Cities and Towns (?)
- e-Vermont Project
- Summit Technologies

Barriers

- Ensuring security
- School/Village/Shared (ownership)
- Costs
 - Financial
 - Staffing
 - Infrastructure
 - Maintenance
- Anti-trust law



Next Steps: Recommendations

1. Two board chairs and Executives seek to frame a common committee charge for approval by each board for the purpose of further exploration of joint interests and possibilities.
2. Upon that, each board chair names 3 individuals to the school/village Wi-Fi committee to address the charge.