



July 6 2011

David Crawford
Village Manager
Village of Essex Junction
2 Lincoln Street
Essex Junction, Vermont 05452

RE: Environmental Noise Monitoring – Relay for Life

Dear Mr. Crawford;

Vermont Air Testing Services (VATS) was retained by the Village of Essex Junction to perform perimeter environmental noise monitoring at the Champlain Valley Exposition (CVE) for selected outdoor events held at the facility throughout 2011. Noise monitoring was performed using Quest Technologies Sound Pro DL Type II integrating/logging sound level meters (SLM) setup to collect broadband noise level readings. The SLM used for the monitoring was configured to log average sound pressure levels every 5 seconds in the broadband or A-weighted scale. The meter's microphone was fitted with a windscreen to minimize wind disturbance. The meter was calibrated to a 114 decibel (dB) tone prior to and following the noise monitoring event.

The SLM was deployed for the Relay for Life event held at CVE on June 24, 2011 through the early morning of June 25, 2011. A single SLM was used to monitor the event which was placed on the east side boundary near the fence line adjacent to the access road approximately 200 feet south of the Green Gate entrance. The Relay for Life event was 12-hour continuous event held overnight in the Midway area of the CVE grounds. An event stage and sound system were set up immediately adjacent to the Ware Administration building with the relay participants staged along the pathways throughout the Midway area.

The weather throughout the event was overcast skies with the temperatures in the low 60's °F and the winds out of the southeast from 4 to 14 mph. No precipitation was noted during the monitoring event.

Noise monitoring began at 6:17 pm on June 24th and concluded at 6:17 am the following morning of June 25th. The noise monitoring data is presented in the attached chart and a summary of the monitoring data is provided below.

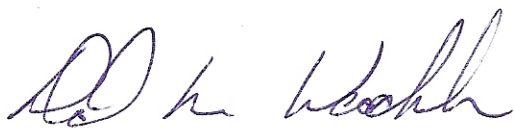
It should be noted that the regulated maximum noise levels change during the course of the event. The maximum hourly average noise level from 6 pm to 12 am was 78 dBA with the maximum 5 minute average noise level defined at 83 dBA. The allowable noise levels decreased to 55 dBA and 65 dBA, respectively for the midnight hour. The allowable noise levels further decreased to 50 dBA and 60 dBA, respectively, beginning at 1 am until the 7 am time period. The table below presents the SLM property line hourly average noise data, the maximum noise levels and the time duration of noise levels above maximum allowable noise level in minutes.

	Hour											
	1	2	3	4	5	6	7	8	9	10	11	12
Hourly Average (dBA)	57.8	54.8	56.4	51.2	51.3	52.4	51.2	51.2	47.0	45.4	46.5	51.9
Max Noise Level (dBA)	65.8	64.4	59.7	60.4	69.1	61.0	59.3	57.6	53.5	54.2	56.3	71.2
Time Above Max Level (min)	0.1	0.0	0.0	0.0	0.0	0.0	0.0	0.3	0.0	0.0	0.0	2.5

The data presented above indicates the hourly average noise limit of 50 dBA during Hour 8 and Hour 12 were as exceeded along the east property boundary during the Relay for Life event held at the CVE on June 24 through June 25, 2011. The noise level exceedance during Hour 12 was likely due to increased vehicle traffic in close proximity to the SLM, which was immediately adjacent to the access road being used as vehicles exited the facility at the end of the event. It is a strong possibility the recorded sound level measurements would have been lower during Hour 12 had the SLM been placed next to the fence line. The maximum noise level was not exceeded along the east property boundary throughout the event. The maximum noise limit is defined as a sustained maximum five-minute average in the established noise criteria limits.

The noise level data is presented in attached chart for the SLM used during the Relay for Life monitoring event held on June 24 through June 25, 2011. The noise levels measured throughout the event did not exceed the established noise level criteria with the exception of Hour 8 and Hour 12 for the hourly average noise level. There are no mitigating circumstance associated the Hour 8 exceedance, although the Hour 12 exceedance was likely caused by increased vehicle traffic in close proximity to the SLM. The established noise level criteria used for monitoring outdoor events held at the Champlain Valley Exposition are defined in the Noise Indemnification Agreement between the Champlain Valley Exposition and the Village of Essex Junction. In addition, the 12 am through 7 am noise criteria limits are specified in the Village of Essex Junction Land Development Code, Chapter 7, Section 718.

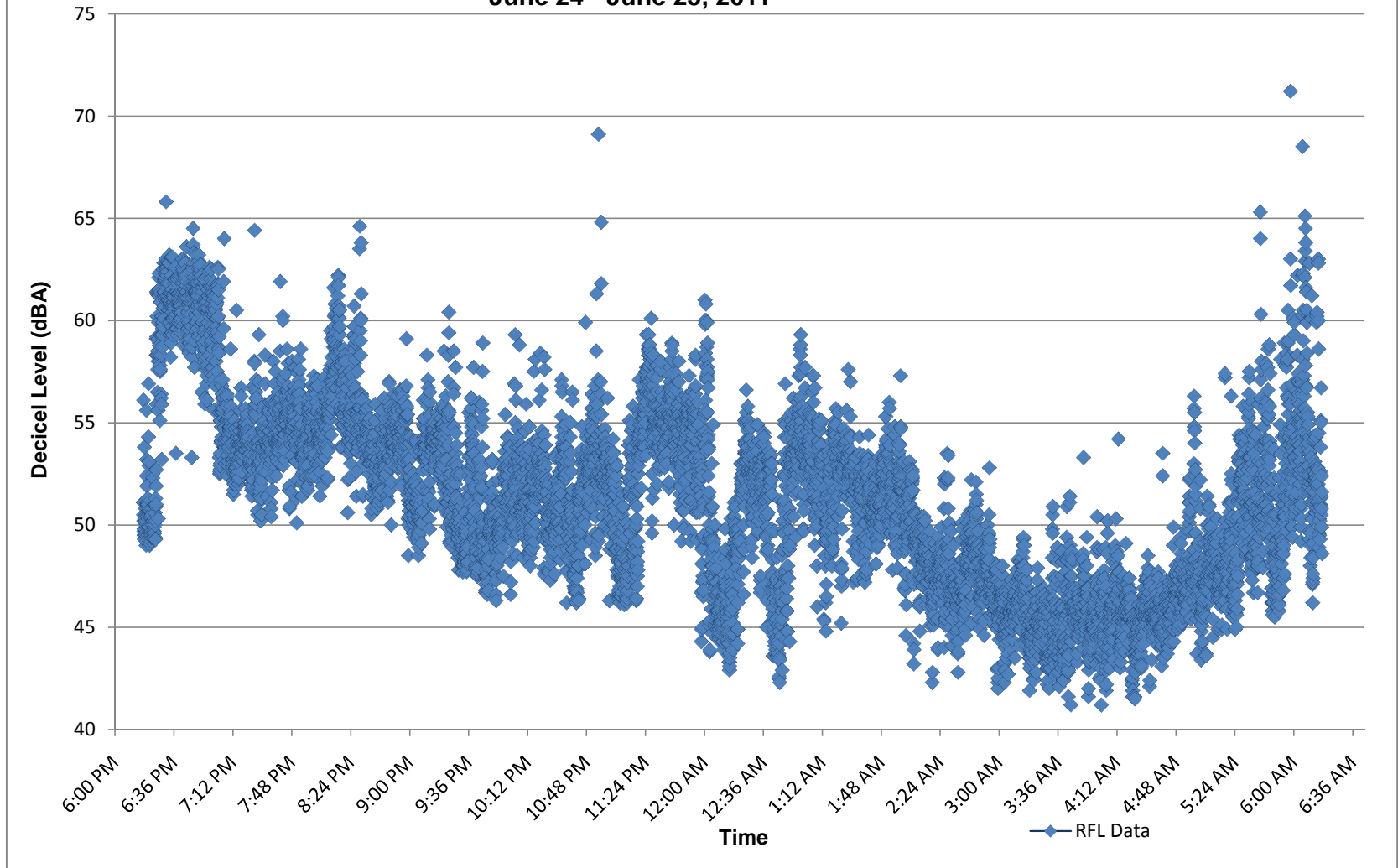
Best regards,



Senior Scientist/Principal

C:\Vermont Air Testing Services\Projects\Champlain Valley Exposition\2011\Relay for Life 2011.docx

**Champlain Valley Exposition
Relay for Life - East Boundary Noise Monitoring
June 24 - June 25, 2011**



	Hour 1	Hour 2	Hour 3	Hour 4	Hour 5	Hour 6	Hour 7	Hour 8	Hour 9	Hour 10	Hour 11	Hour 12
Hourly Avg	57.8	54.8	56.4	51.2	51.3	52.4	51.2	51.2	47.0	45.4	46.5	51.9
Max Levels	65.8	64.4	59.7	60.4	69.1	61.0	59.3	57.6	53.5	54.2	56.3	71.2
Exceeding Limit (min)	0.0	0.0	0.0	0.0	0.0	0.0	0.0	0.0	0.0	0.0	0.0	2.5
Max Hourly Averages:	Hour 1 to Hour 6			Hour 7	Hour 8 to Hour 12			Hour 1 to Hour 6: 6 pm to 12 am				
Max Levels (5 min average):	83 dBA			55 dBA	60 dBA			Hour 7: 12 am to 1 am				
				65 dBA				Hour 8 to Hour 12: 1 am to 6 am				